

"ADOPT YOUR DRAIN"



**A PUBLIC INVOLVEMENT
PROGRAM**



ICE BREAKER:
What do you think
stormwater pollution
is?

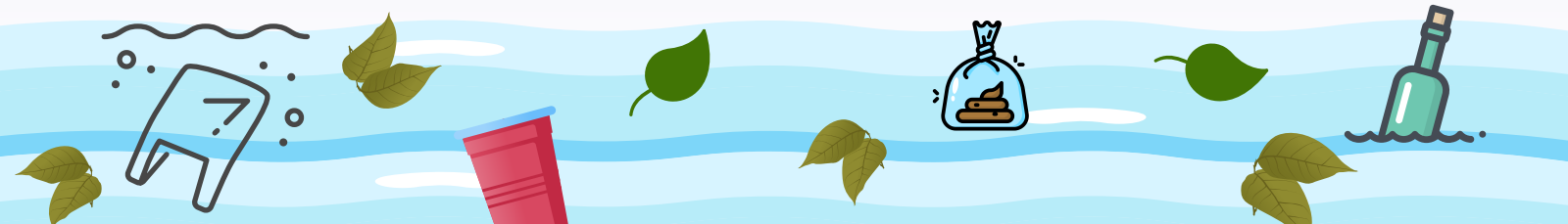


WHAT IS *STORMWATER* POLLUTION?

When rain falls and snow melts, it can be defined as stormwater. When stormwater runs through our streets, it carries dirt, debris, and trash to our storm drains!

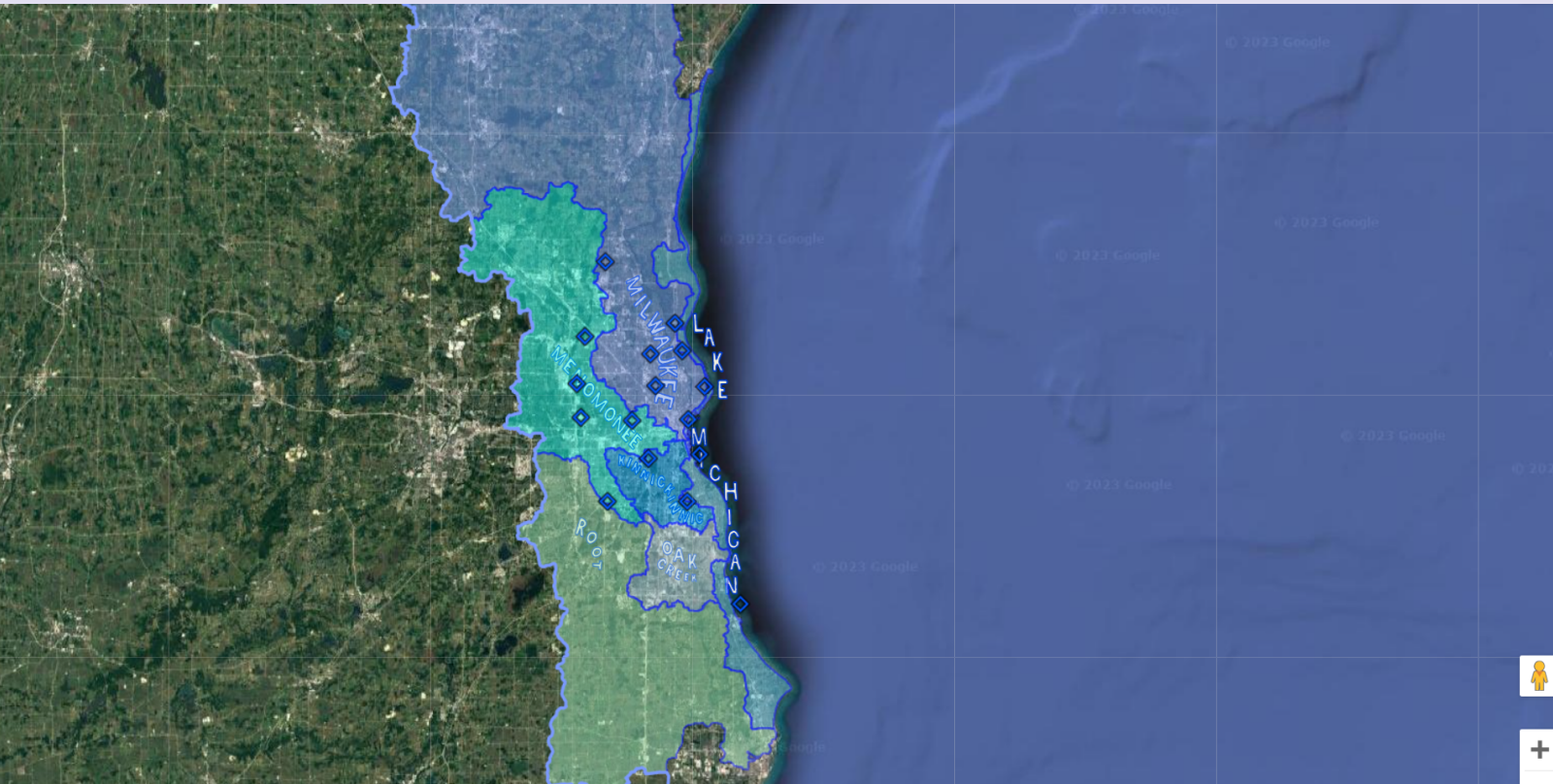
Storm drains are everywhere, in front of your school, your home, parks, and businesses!

When polluted water enters these drains, it goes directly into our local watershed; our rivers and streams that lead to Lake Michigan. It can also cause drains to get blocked, leading to serious flooding issues. Not only does this have a very negative impact on wildlife in those bodies of water, it has a major financial impact to humans as we have to treat that water before it is useable again.



OUR LOCAL WATERSHED

Visit interactive map here: <https://www.refloh2o.com/watersheds-map>



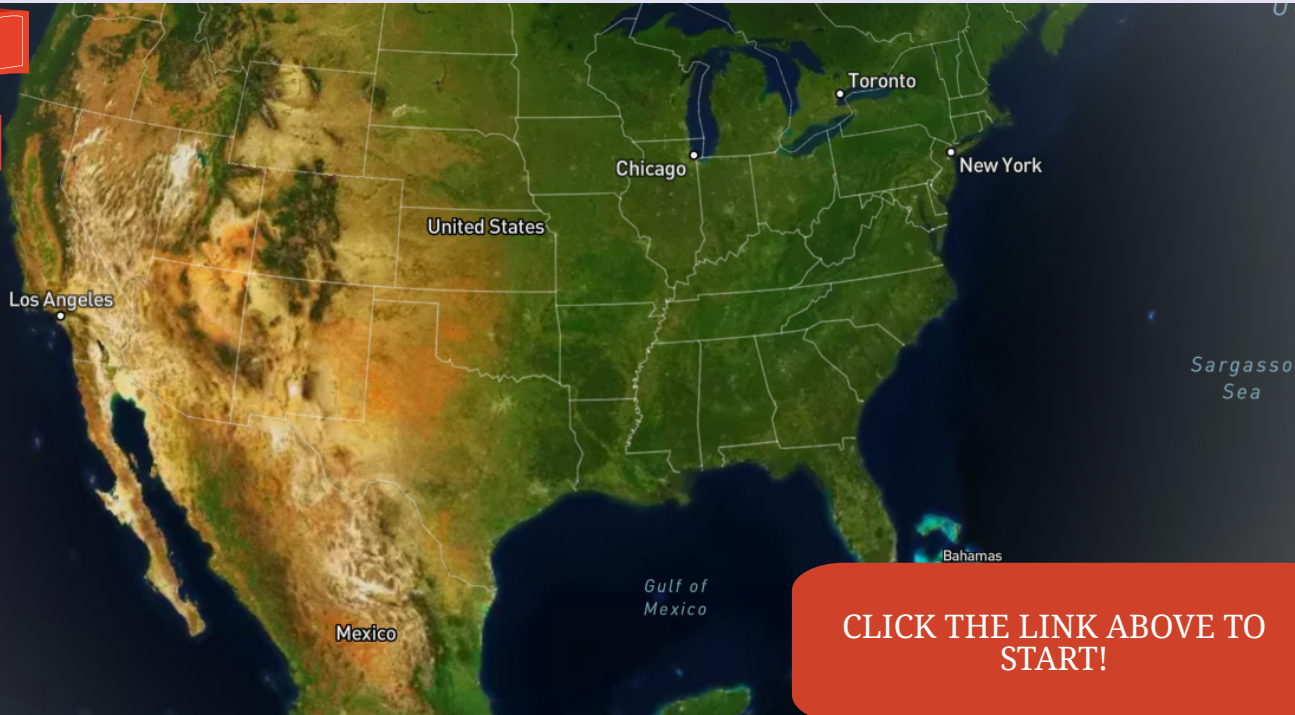
EXERCISE: FOLLOW A RAIN DROP!

River Runner (samlearner.com)

FOLLOW

A

RAIN DROP




CLICK THE LINK ABOVE TO
START!

WHAT COULD A RAIN DROP PICK UP ON ITS WAY TO THE STORM DRAIN?

Trash 

Plastics 

Pesticides 

Fertilizer 

Salt 

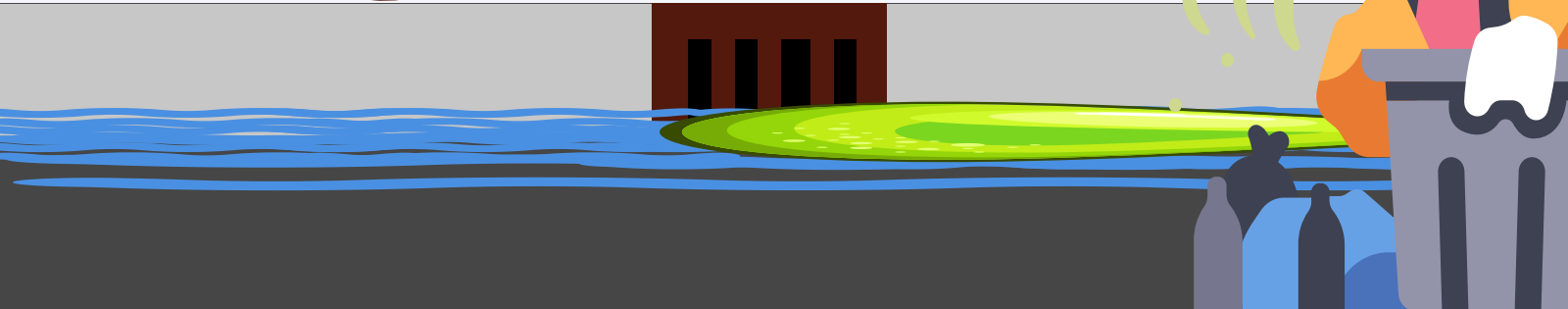
Leaves 

Sediment 

Car Oil 

Household Chemicals 

Pet Waste 



HOW DO THESE POLLUTANTS AFFECT OUR WATERWAYS?

Trash + Plastics

When trash and plastic are left on storm drains, they eventually end up in our ponds, rivers, and lakes. Polluting these waterways harms both fish and humans.

Fertilizers, Pesticides, and Leaves

Fertilizers, Pesticides, and dead and decaying leaves can easily run off from your lawn and into the storm drains. These leaves and lawn applicators release excessive nutrients into our water. Having excess nutrients in the water creates algae blooms and dead zones. These dead zones kill aquatic life.

Dead Zone: an area of water where the oxygen content is so low, that no fish can survive.

Car Oil + Household Chemicals

The EPA states that used oil from a single oil change can pollute 1 million gallons of freshwater, and that if household cleaners enter our storm drains it requires at least 20,000 ounces of water of dilution to be safe for fish.

Sediment

Did you know that the EPA ranks sediment as the #1 pollutant source in our fresh waterways? Sediment pollution from erosion happens naturally, but human activity speeds up this process by a lot! Sediment is harmful for 2 main reasons:

1. It clogs our storm drains which increases the chance of local flooding
2. It makes our water murky. This can prevent plants from accessing sunlight and fish from seeing food. It can also contaminate our drinking water.

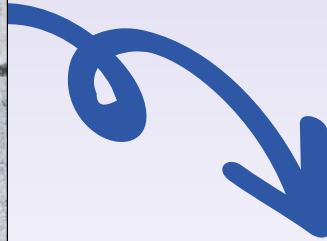
Salt

Salt use is required in the winter to keep us safe! However, salt is very harmful to Lake Michigan. When salt enters our waters through storm drains, it changes the salinity of the fresh water. Having saltier water bodies harms our local aquatic life and changes the taste of our drinking water.

Pet Waste

Pet waste left near or on storm drains allows pathogens and bacteria to enter our waterways. Bacteria presence in Lake Michigan is harmful for aquatic life and results in local beach closures. No one wants to swim in waste-filled water!

POLLUTED STORM DRAINS, HOW TO SOLVE THIS?



Water and other debris flows into our storm drains and is sent directly into our rivers, ponds, and lakes *completely untreated.*



What is something we can ALL do to help.....?

ADOPT YOUR DRAIN!!



TO HELP KEEP OUR LOCAL WATERWAYS CLEAN

HOW TO PARTICIPATE AS A CLASSROOM

Participate in the Adopt Your Drain program through one of these methods:

1. Adopt 1 local storm drain as a class and report on all the debris you cleared off throughout the year.
2. Participate in one of Sweet Water's storm drain stenciling events.
3. Have each student adopt their storm drains at home. If multiple classrooms do this, have a contest and see which one adopts the most drains!

SOURCES AND RESOURCES

Respect Our Waters

Watersheds Map — Reflo (refloh2o.com)

River Runner (samlearner.com)

Adopt Your Drain

*What is Sediment Pollution? Brochure
(epa.gov)*

Volunteer with...



ADOPT YOUR DRAIN

What is Adopt Your Drain?

Adopt Your Drain is an opportunity to prevent street flooding & some forms of stormwater pollution by clearing storm drains of debris.

What is Stormwater Pollution?

Stormwater pollution is rainwater that has picked up litter, chemicals, yard & pet waste, and other pollutants, carrying them into our local rivers & lakes.

STEP 1

Visit www.AdoptYourDrain.com and create an account.

Click the Register / Sign In Button and add your

- Email Address
- New Password
- First Name
- Last Name



Choose your drain.

STEP 2

Use the search bar to look up your address & select a drain near you!

Depending on your community, you might adopt a storm drain or a stormwater ditch.

STEP 3

Clean your drain.

Clean yard waste, litter, and other debris on the 1st and 15th of the month, and before and after rainfall.



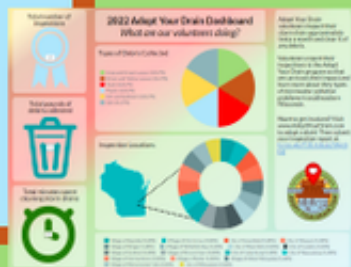
STEP 4

Report your volunteerism.

After cleaning your storm drain or stormwater ditch, report what you found in your drain!

Find the survey & volunteer dashboard at

www.RespectOurWaters.org/AYD-Dashboard



Where can I learn about other ways to prevent stormwater pollution?

Visit www.RespectOurWaters.org to find more ways to keep our local lakes and rivers clean!

Find tips for staying safe while cleaning, proper disposal of debris, and more at www.AdoptYourDrain.com!

Adopt Your Drain is a program of

