

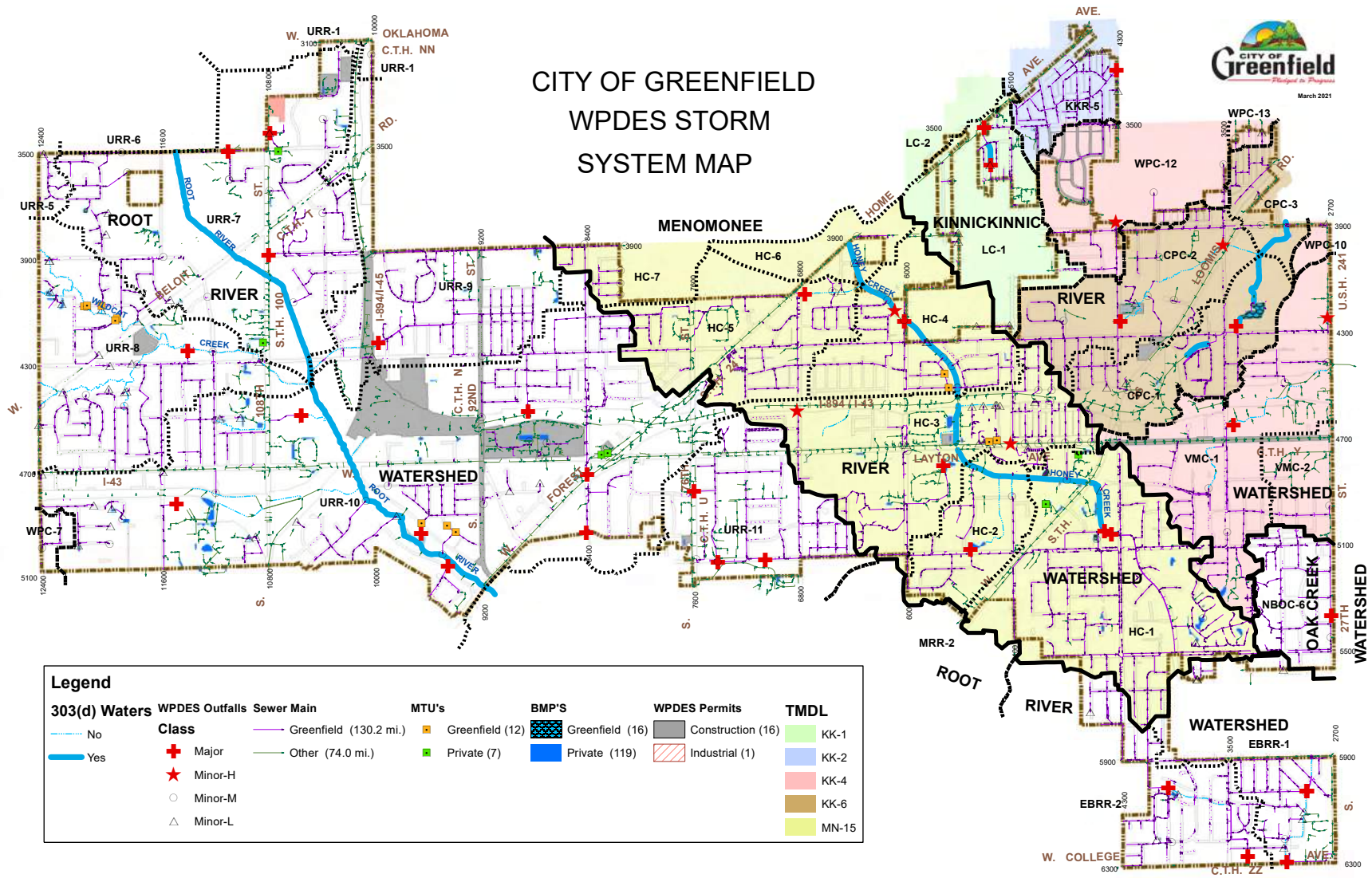
APPENDIX G. MUNICIPAL SEPARATE STORM SEWER SYSTEM MAPS

Civil Division	Map Source
Milwaukee County	TBD
City of Greenfield	2020 MS4 Annual Report
City of Milwaukee*	2020 MS4 Annual Report
City of Wauwatosa	2020 MS4 Annual Report
City of West Allis	2020 MS4 Annual Report
Village of Greendale	TBD
Village of West Milwaukee	TBD
Ozaukee County	2020 MS4 Annual Report
City of Mequon	2019 MS4 Annual Report
Washington County	2020 MS4 Annual Report
Town of Germantown	TBD
Village of Germantown	2020 MS4 Annual Report
Village of Richfield	2020 MS4 Annual Report
Waukesha County	2020 MS4 Annual Report
City of Brookfield	2019 MS4 Annual Report
City of New Berlin	2020 MS4 Annual Report
Town of Brookfield	2020 MS4 Annual Report
Town of Lisbon	TBD
Village of Butler	TBD
Village of Elm Grove	2020 MS4 Annual Report
Village of Menomonee Falls	2020 MS4 Annual Report

*Also partially in Washington and Waukesha County

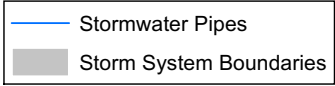
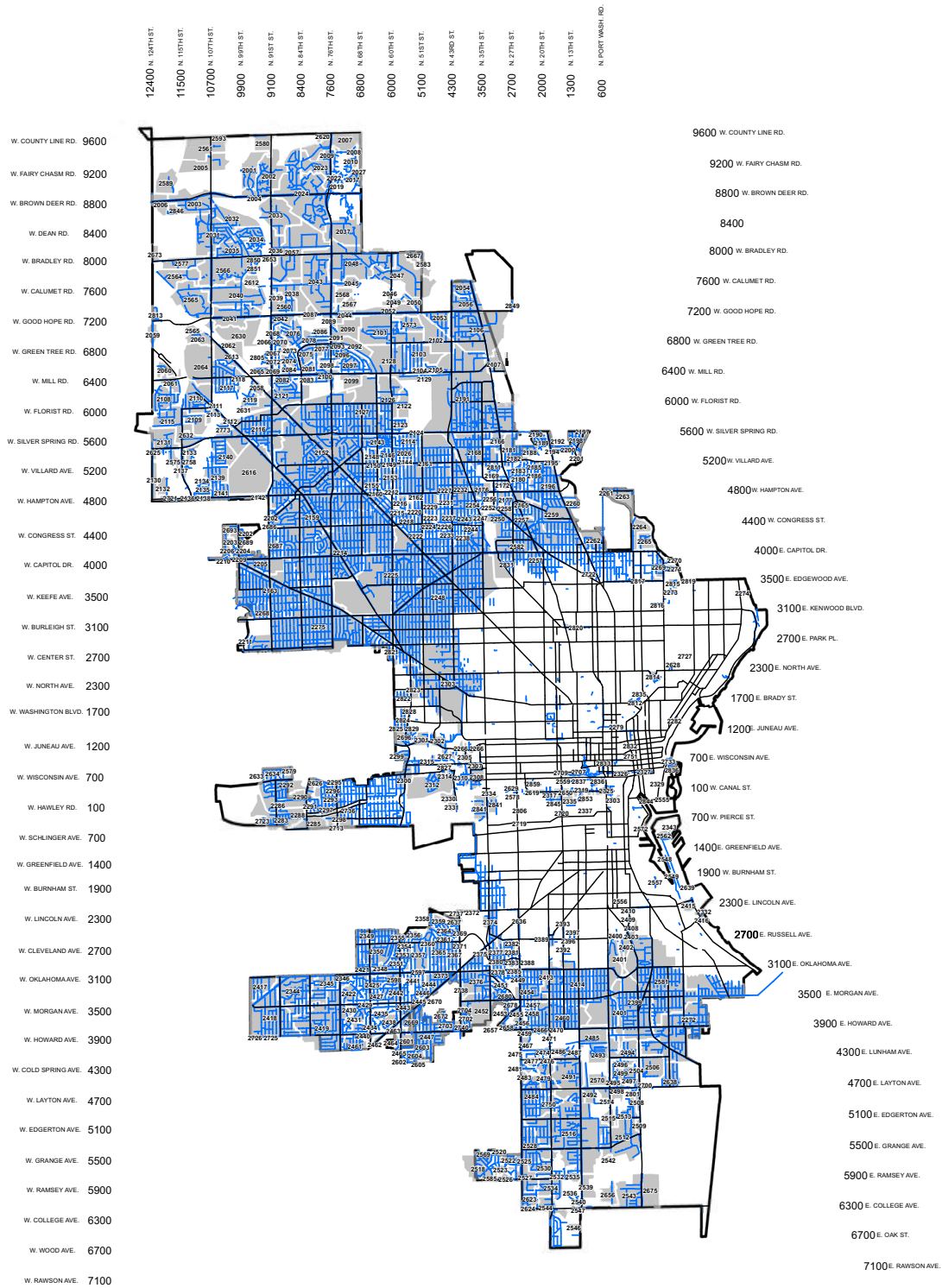
THE MEMOMONEE RIVER WATERSHED UPDATED IMPLEMENTATION PLAN

City of Greenfield MS4 Map

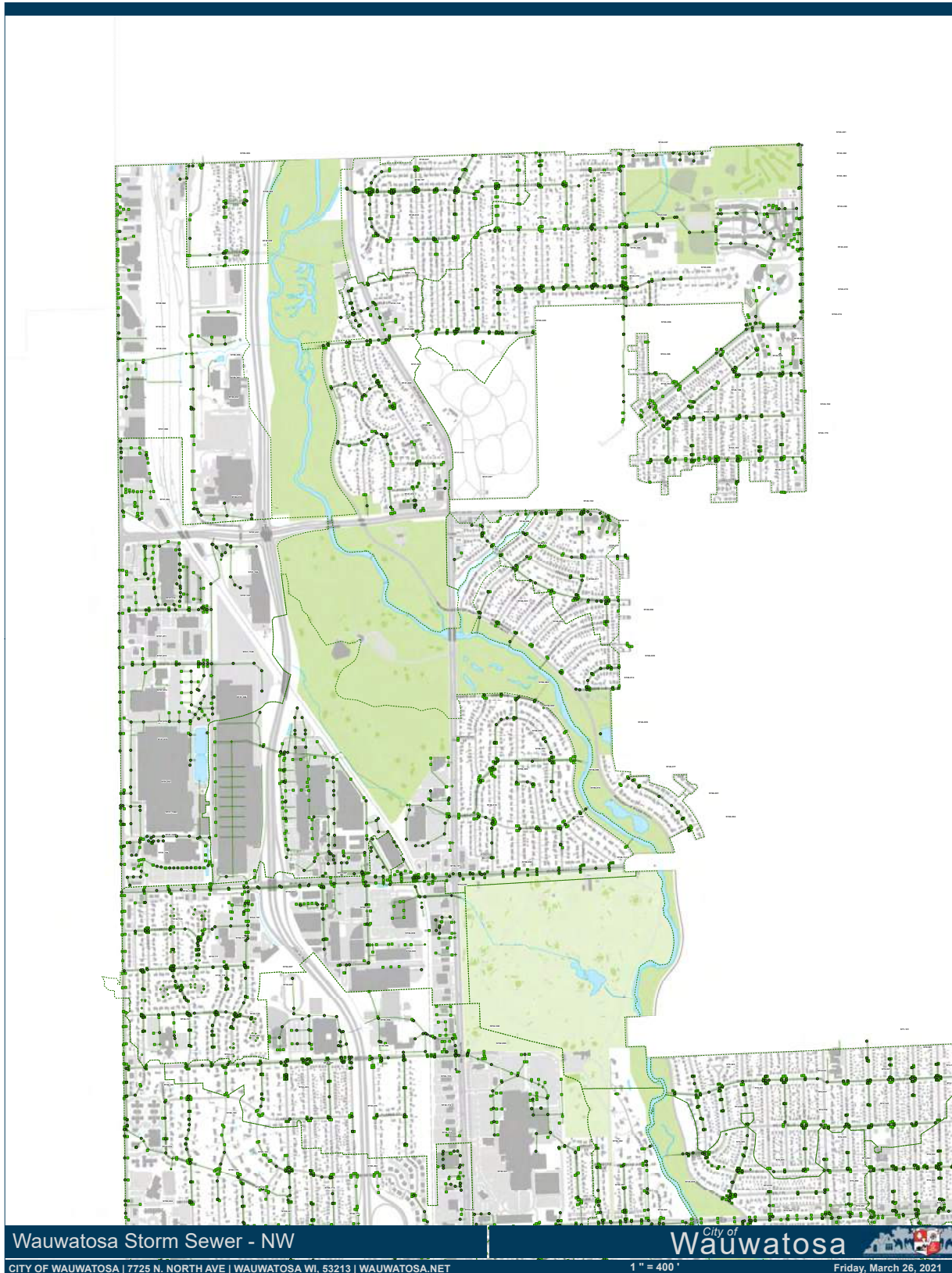


THE MENOMONEE RIVER WATERSHED UPDATED IMPLEMENTATION PLAN

City of Milwaukee MS4 Map

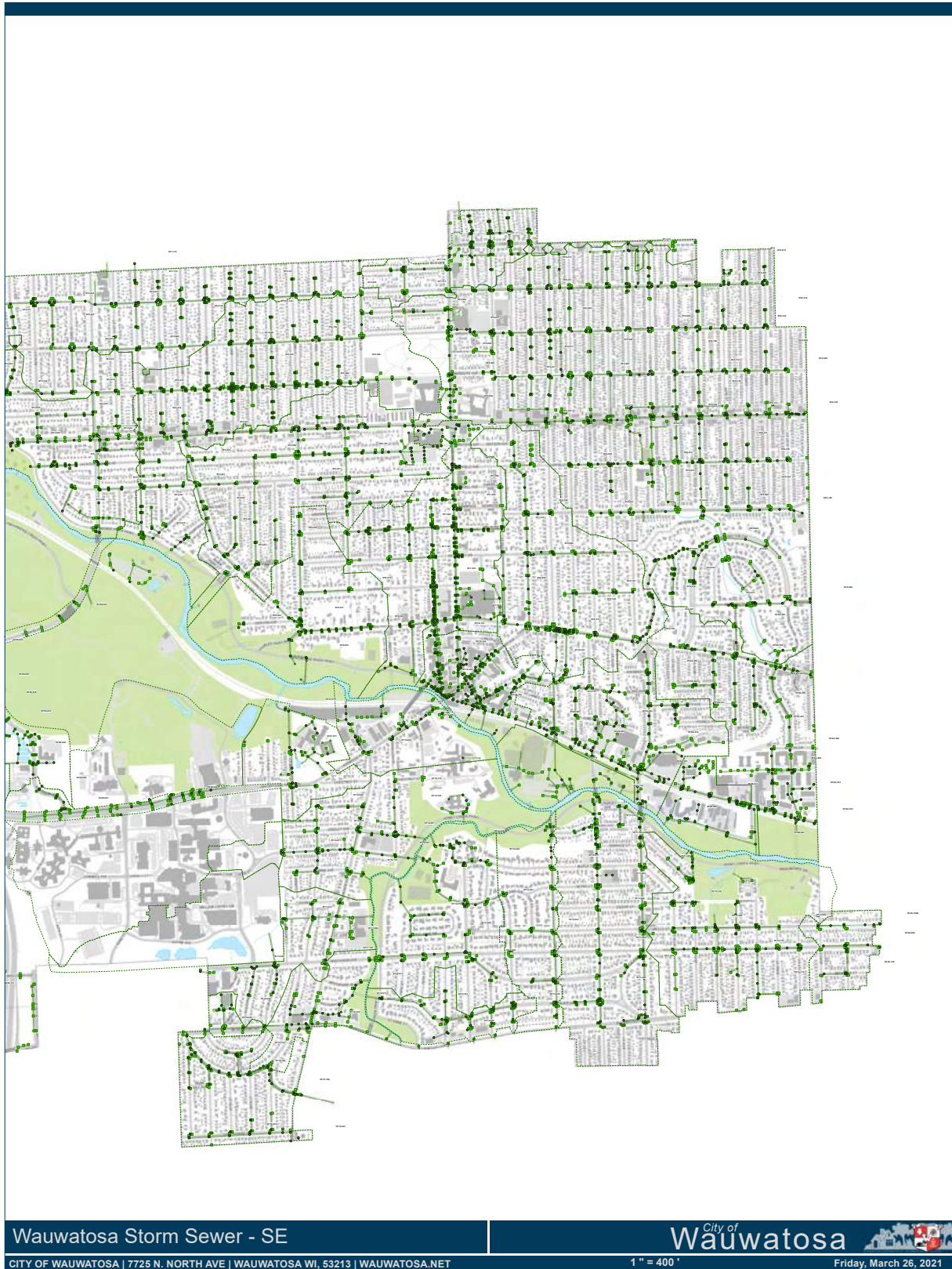


City of Wauwatosa MS4 Map (1 of 3: NW)

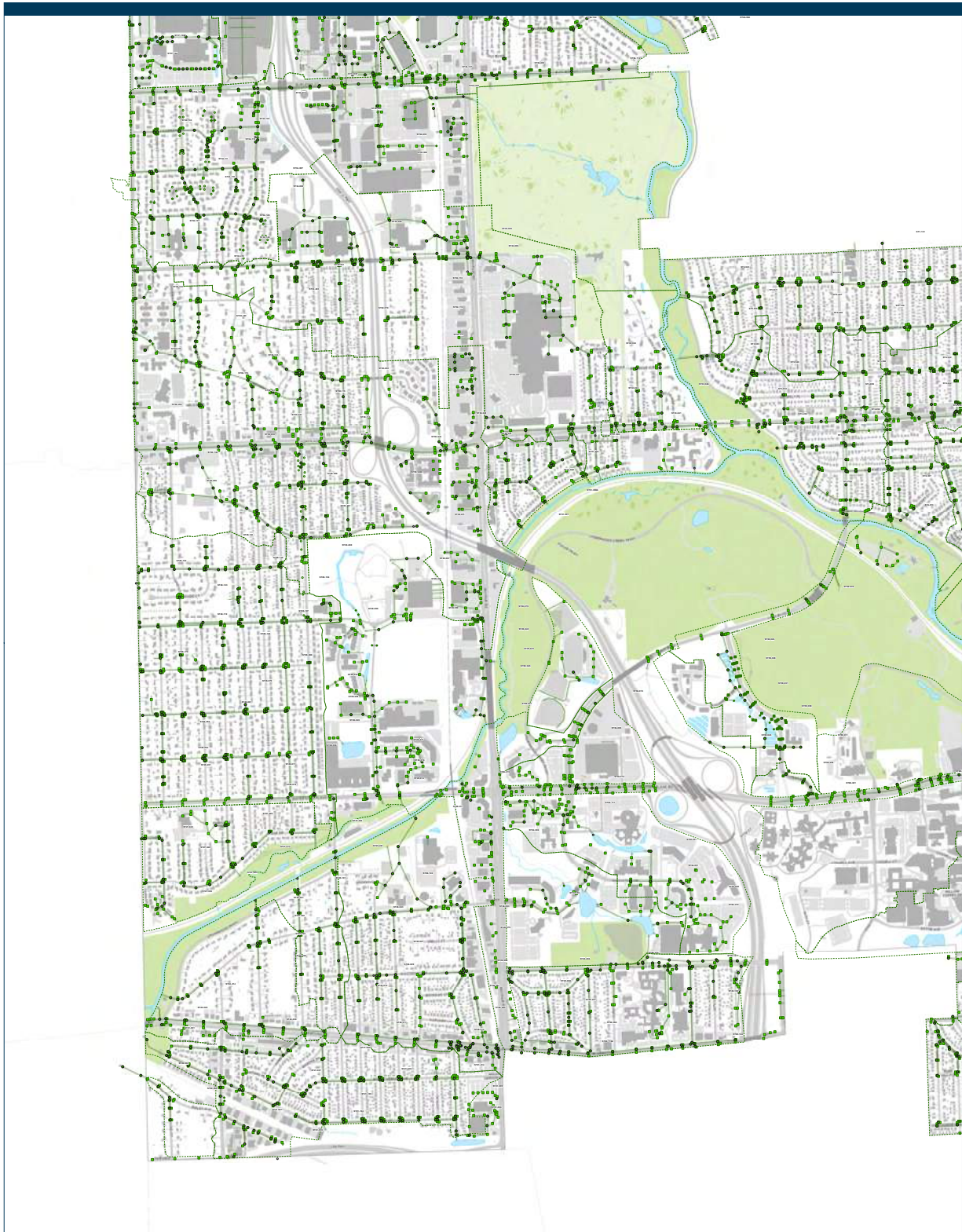


THE MENOMONEE RIVER WATERSHED UPDATED IMPLEMENTATION PLAN

City of Wauwatosa MS4 Map (2 of 3: SE)



City of Wauwatosa MS4 Map (3 of 3: SW)



Wauwatosa Storm Sewer - SW

CITY OF WAUWATOSA | 7725 N. NORTH AVE | WAUWATOSA WI, 53213 | WAUWATOSA.NET

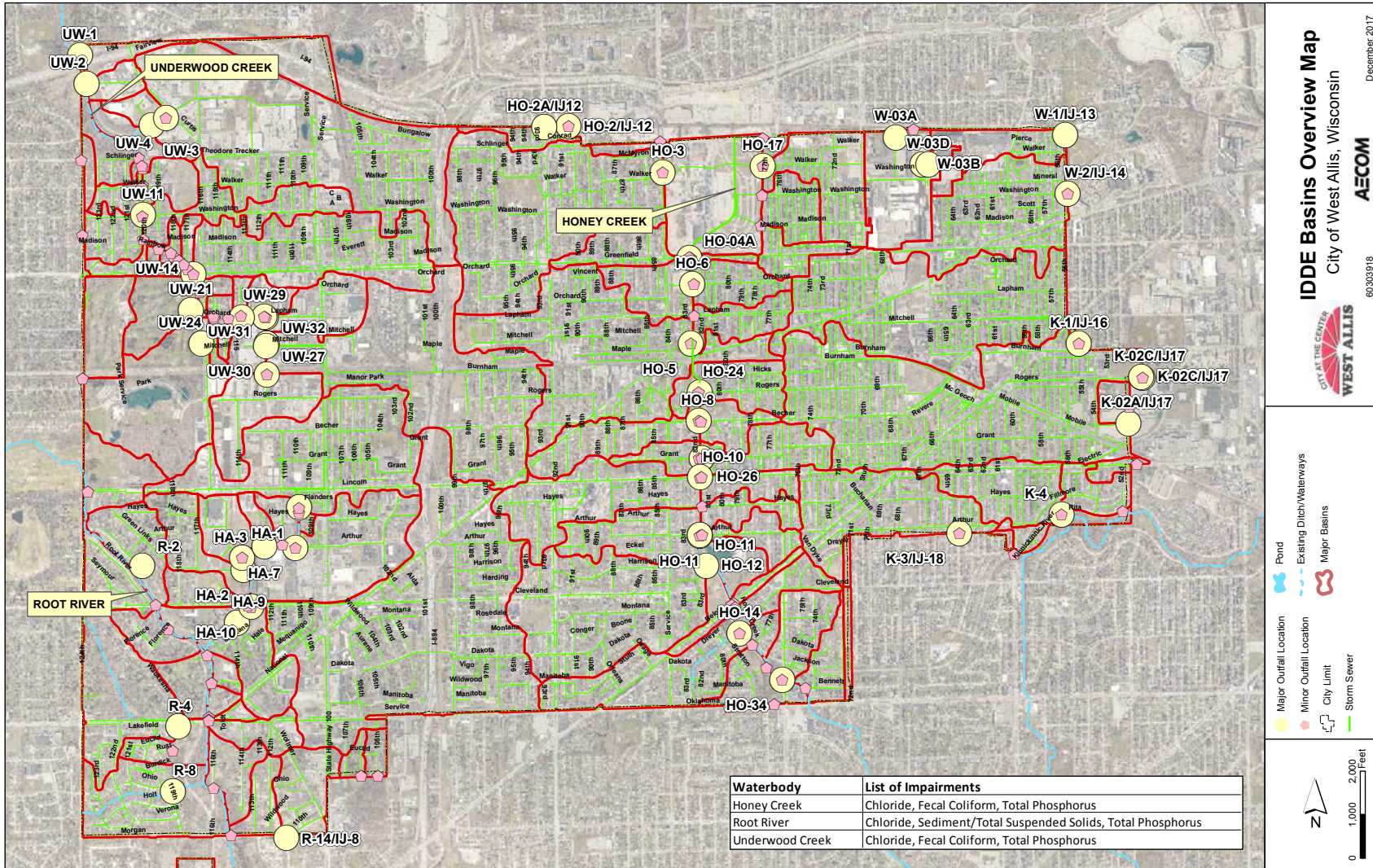
City of Wauwatosa

1" = 400'

Friday, March 26, 2021

THE MEMOMONEE RIVER WATERSHED UPDATED IMPLEMENTATION PLAN

City of West Allis MS4 Map

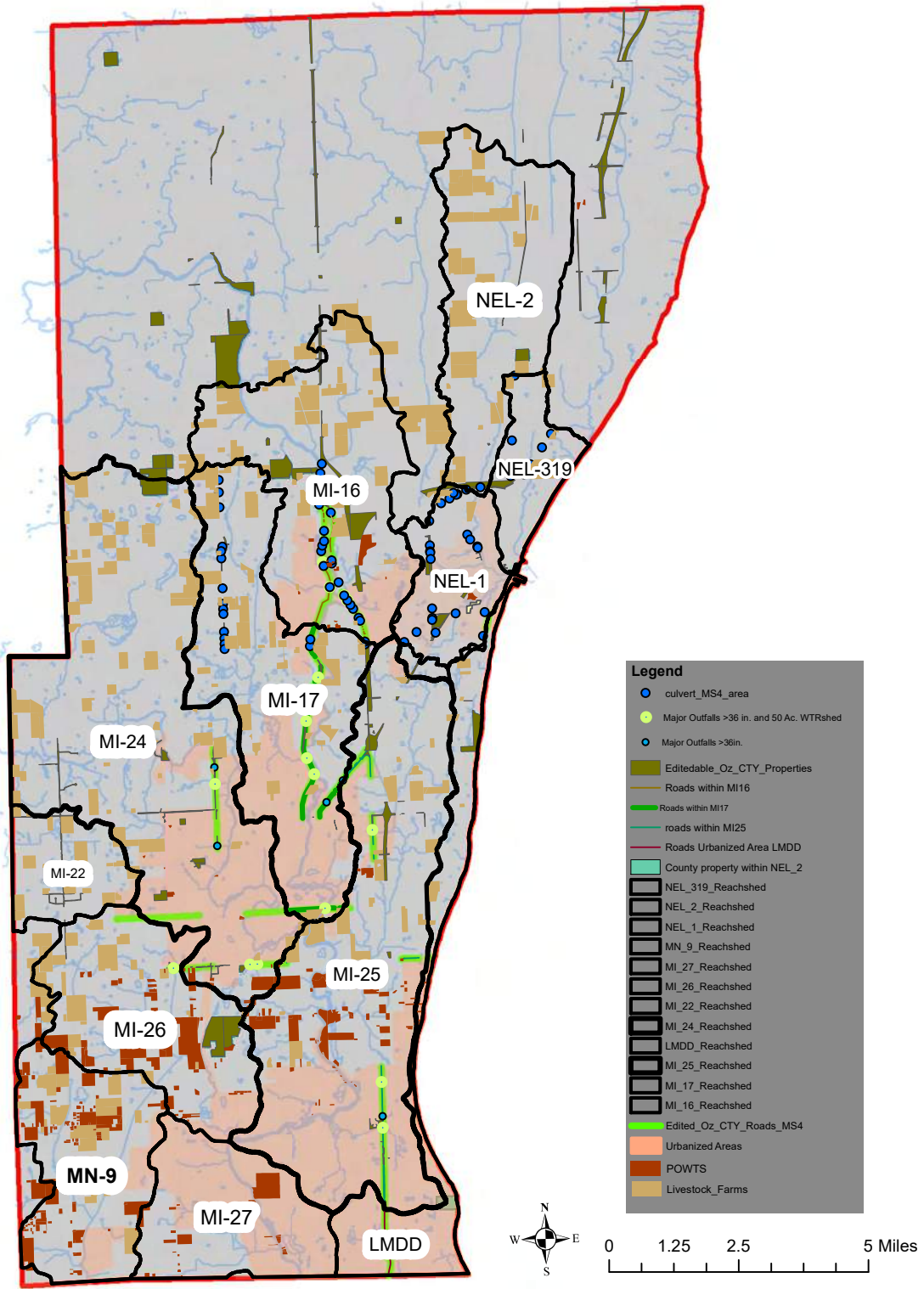


P:\60303918\900-CAD-GIS\920 GIS-Graphics\mxd\2014\Map\2014 IDDE-Basin_HO_05.mxd

IDDE Basins Overview Map
 City of West Allis, Wisconsin
 AECOM
 60303918
 December 2017

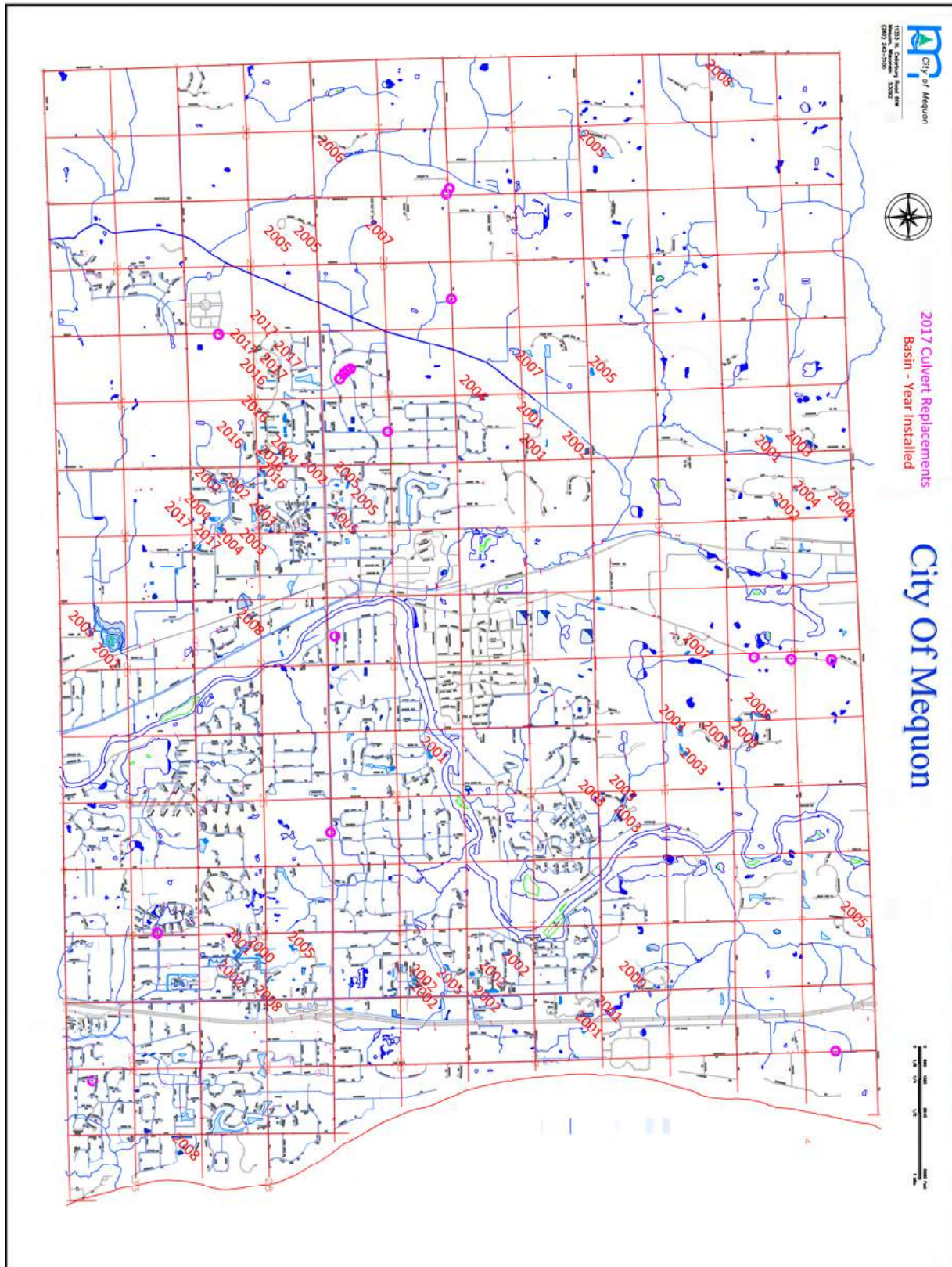
Ozaukee County MS4 Map

Ozaukee County Storm Sewer System Map



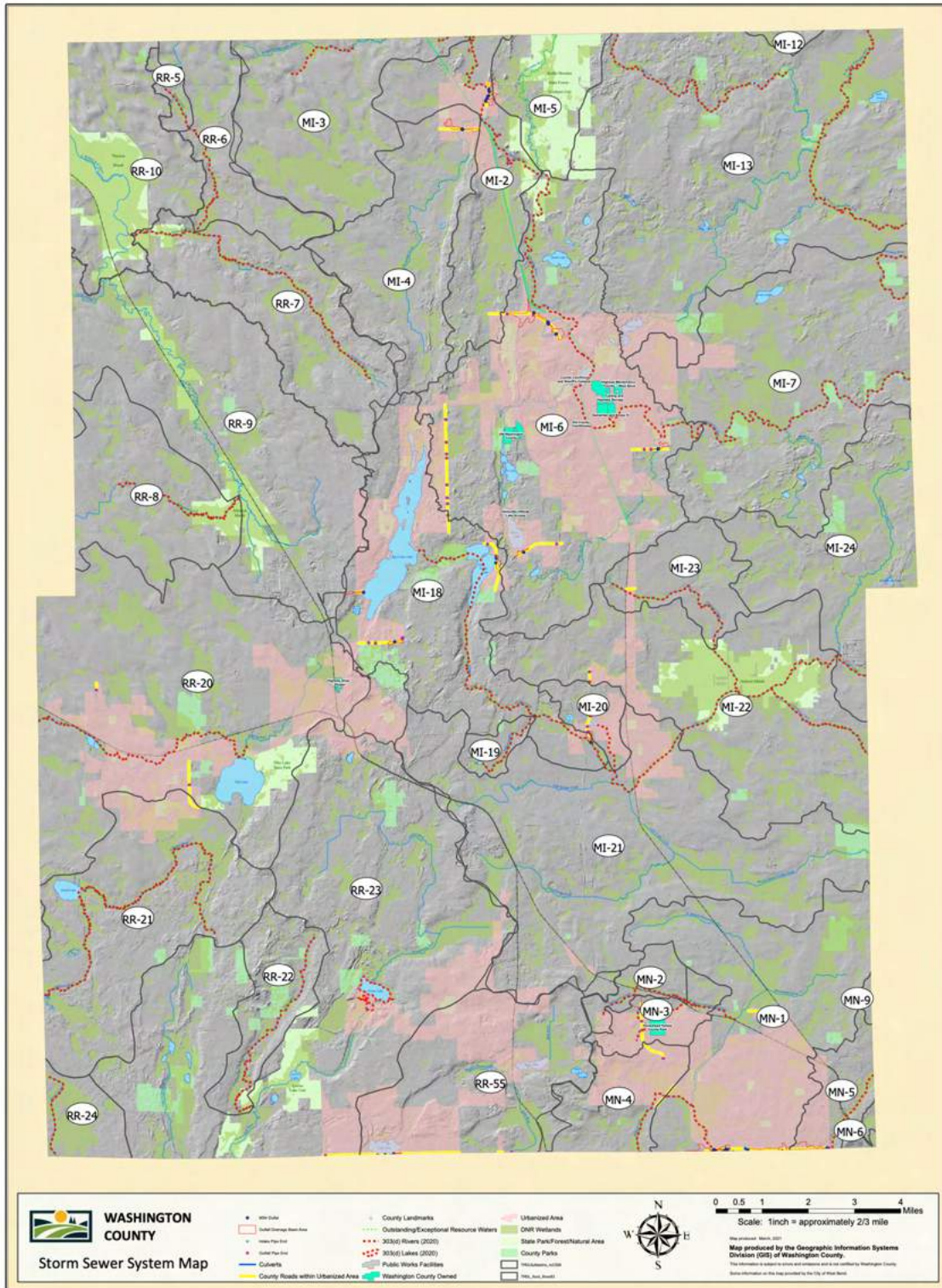
THE MEMOMONEE RIVER WATERSHED UPDATED IMPLEMENTATION PLAN

City of Mequon MS4 Map



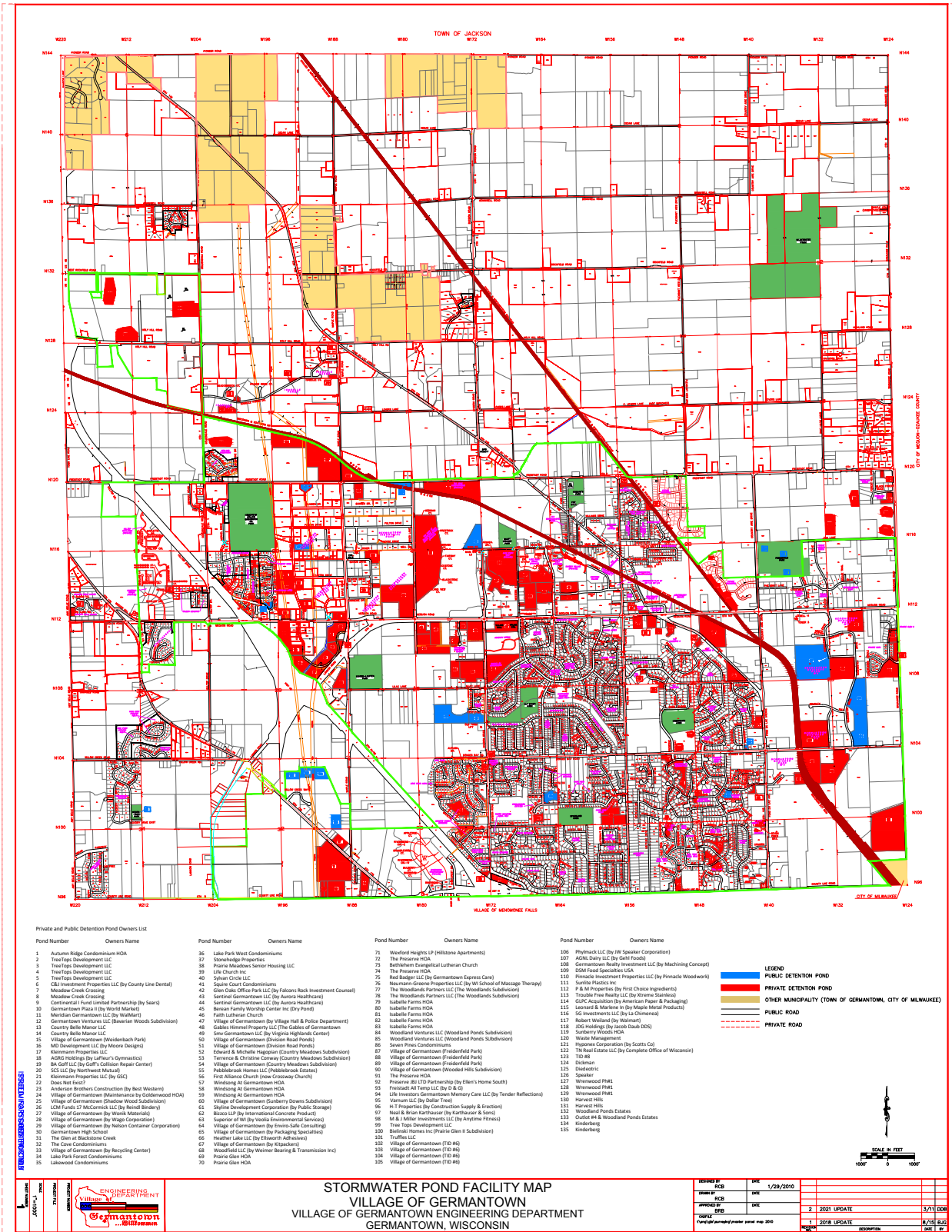
THE MENOMONEE RIVER WATERSHED UPDATED IMPLEMENTATION PLAN

Washington County MS4 Map



THE MEMOMONEE RIVER WATERSHED UPDATED IMPLEMENTATION PLAN

Village of Germantown MS4 Map



Private and Public Detention Pond Owners List

Pond Number	Owners Name	Pond Number	Owners Name	Pond Number	Owners Name
1	Autumn Ridge Condominiums HOA	36	Lake Park Wood Condominiums	71	Woodford Heights LP (Hilstone Apartments)
2	TrailFog Development LLC	37	Stancher Properties	72	The Preserve HOA
3	TrailFog Development LLC	38	Pratica Meadows Senior Housing LLC	73	Bethlehem Evangelical Lutheran Church
4	TrailFog Development LLC	39	Life Church Inc	74	The Preserve HOA
5	TrailFog Development LLC	40	Sylvan Circle LLC	75	Rail Badger LLC (By Germantown Express Care)
6	CB Investment Properties LLC (By County Line Dental)	41	Sage Court Condominiums	76	Neumann-Greene Properties LLC (By W School of Massage Therapy)
7	Mousoe Creek Crossing	42	Glen Oaks Office Park LLC (By Falconer Rock Investment Counsel)	77	The Woodlands Partners LLC (The Woodlands Subdivision)
8	Mousoe Creek Crossing	43	Sentinel Communities LLC (By Aurora Healthcare)	78	Isabelle Farms HOA
9	Continental Foundland Partnership (By Sears)	44	Sentinel Communities LLC (By Aurora Healthcare)	79	Isabelle Farms HOA
10	Germantown Plaza II (By World Market)	45	Bertram Family Worship Center Inc (By Ponds)	80	Isabelle Farms HOA
11	Merrillan Germantown LLC (By World Market)	46	Faith Lutheran Church	81	Isabelle Farms HOA
12	Germantown Ventures LLC (Beveran Woods Subdivision)	47	Village of Germantown (By Village Hall & Police Department)	82	Isabelle Farms HOA
13	Country Belle Manor LLC	48	Gables Vermont Property LLC (The Gables of Germantown)	83	Isabelle Farms HOA
14	Village of Germantown (Windschbach Park)	49	Sawyer Family (Windschbach Center)	84	Woodland Ventures LLC (Woodland Ponds Subdivision)
15	Village of Germantown (Windschbach Park)	50	Village of Germantown (Division Road Ponds)	85	Woodland Ventures LLC (Woodland Ponds Subdivision)
16	MD Holdings LLC (By Moore Design)	51	Sawyer Family (Windschbach Center)	86	Village of Germantown (Frederick Park)
17	Mannemann Properties LLC	52	Edward & Michelle Haggan (Country Meadows Subdivision)	87	Village of Germantown (Frederick Park)
18	ADMS Holdings (By LaPorte's Gymnastics)	53	Tarvinia & Christine Conway (Country Meadows Subdivision)	88	Village of Germantown (Frederick Park)
19	BA Golf LLC (By Golf's Collision Repair Center)	54	Village of Germantown (Country Meadows Subdivision)	89	Village of Germantown (Frederick Park)
20	SCS LLC (By Northwest Mutual)	55	Publitrade Homes LLC (Pridemore Estates)	90	Village of Germantown (Frederick Park)
21	Mannemann Properties LLC (By GSC)	56	First Alliance Church (New Crossway Church)	91	The Preserve HOA
22	Dore Nest LLC	57	Windschbach At Germantown HOA	92	Preserve BLDG Partnership (By Elder's Home South)
23	Anderson Brothers Construction (By Best Western)	58	Windschbach At Germantown HOA	93	Freizeit All Temp LLC (By D & G)
24	Village of Germantown (Mankinville By Goldenwood HOA)	59	Windschbach At Germantown HOA	94	Life Properties (By Germain Memory Care LLC (By Tender Reflections))
25	Village of Germantown (Shawnee Wood Subdivision)	60	Village of Germantown (Sunbury Downs Subdivision)	95	Vermont LLC (By Dollar Tree)
26	CBM Funds 37 MacCormick LLC (By Bond Brewery)	61	Shawnee Development Corporation (By Public Storage)	96	Life Properties (By Germain Memory Care LLC (By Tender Reflections))
27	Village of Germantown (By World Materials)	62	Buzzco LLP (By International Concrete Products)	97	Near & Brian Karlsruher (By Karlsruher & Sons)
28	Village of Germantown (By Hoge Corporation)	63	Superior of WI (By World Environmental Services)	98	M & V Miller Investments LLC (By Arvidine France)
29	Village of Germantown (By Nelson Container Corporation)	64	Village of Germantown (By Enviro-Safe Consulting)	99	Tree Top Development LLC
30	Village of Germantown (By Nelson Container Corporation)	65	Village of Germantown (By Packaging Services)	100	Ballistic Homes Inc (Phonix Glen S Subdivision)
31	The Glen at Blackstone Creek	66	Heather Lake LLC (By Ellsworth Architects)	101	Truffic LLC
32	The Glen at Blackstone Creek	67	Village of Germantown (By Kipack)	102	Village of Germantown (TID #6)
33	Village of Germantown (By Recycling Center)	68	Woodford LLC (By Winmar Bearing & Transmission Inc)	103	Village of Germantown (TID #6)
34	Lake Park Forest Condominiums	69	Pratica Glen HOA	104	Village of Germantown (TID #6)
35	Lakewood Condominiums	70	Pratica Glen HOA	105	Village of Germantown (TID #6)

LEGEND

- PUBLIC DETENTION POND
- PRIVATE DETENTION POND
- OTHER MUNICIPALITY (TOWN OF GERMANTOWN, CITY OF MILWAUKEE)
- PUBLIC ROAD
- PRIVATE ROAD

SCALE IN FEET
1000' 0 1000'

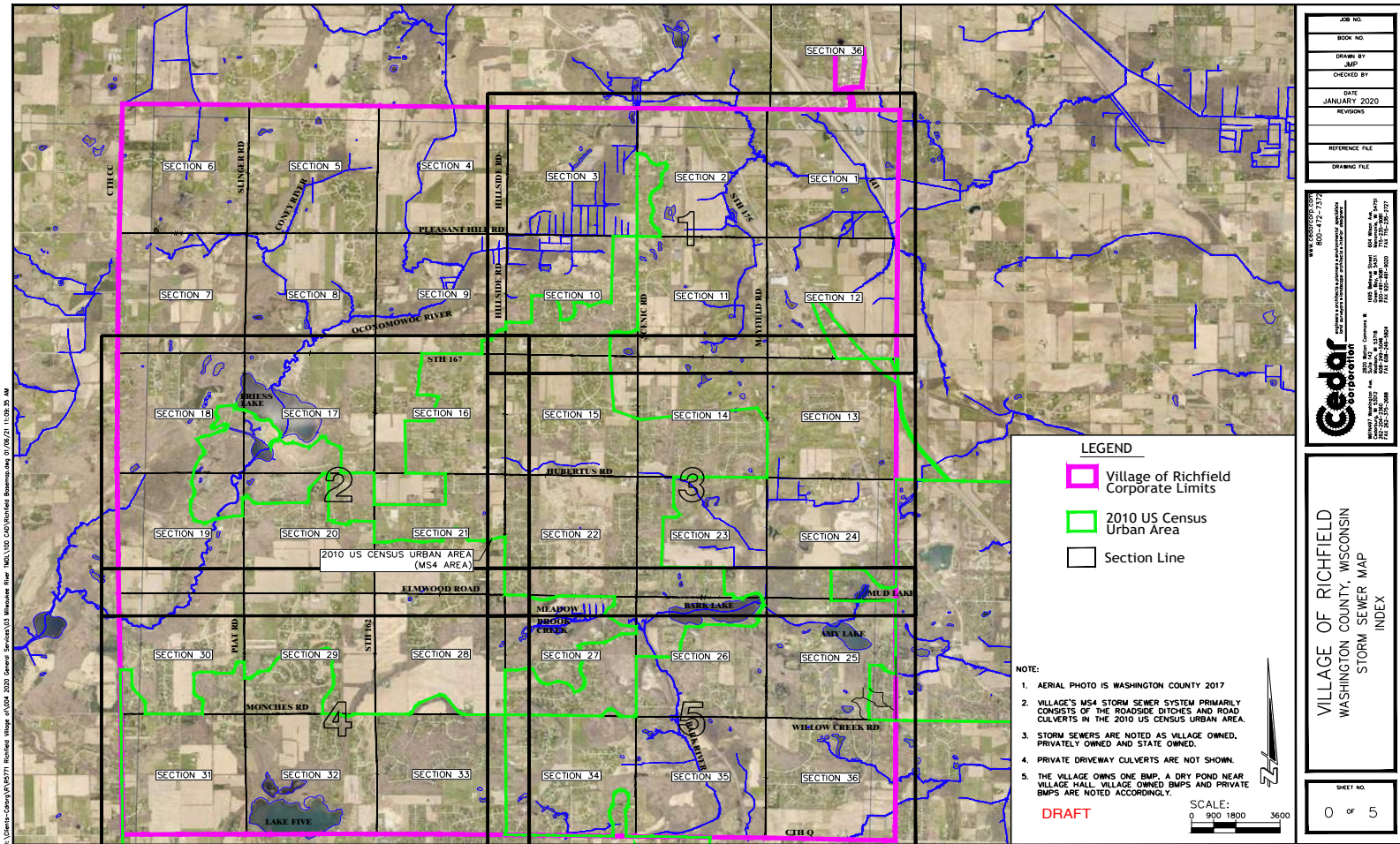


STORMWATER POND FACILITY MAP
VILLAGE OF GERMANTOWN
 VILLAGE OF GERMANTOWN ENGINEERING DEPARTMENT
 GERMANTOWN, WISCONSIN

REVISION #	DATE	DESCRIPTION
1	1/29/2010	INITIAL DESIGN
2	2021 UPDATE	2021 UPDATE
3	2018 UPDATE	2018 UPDATE

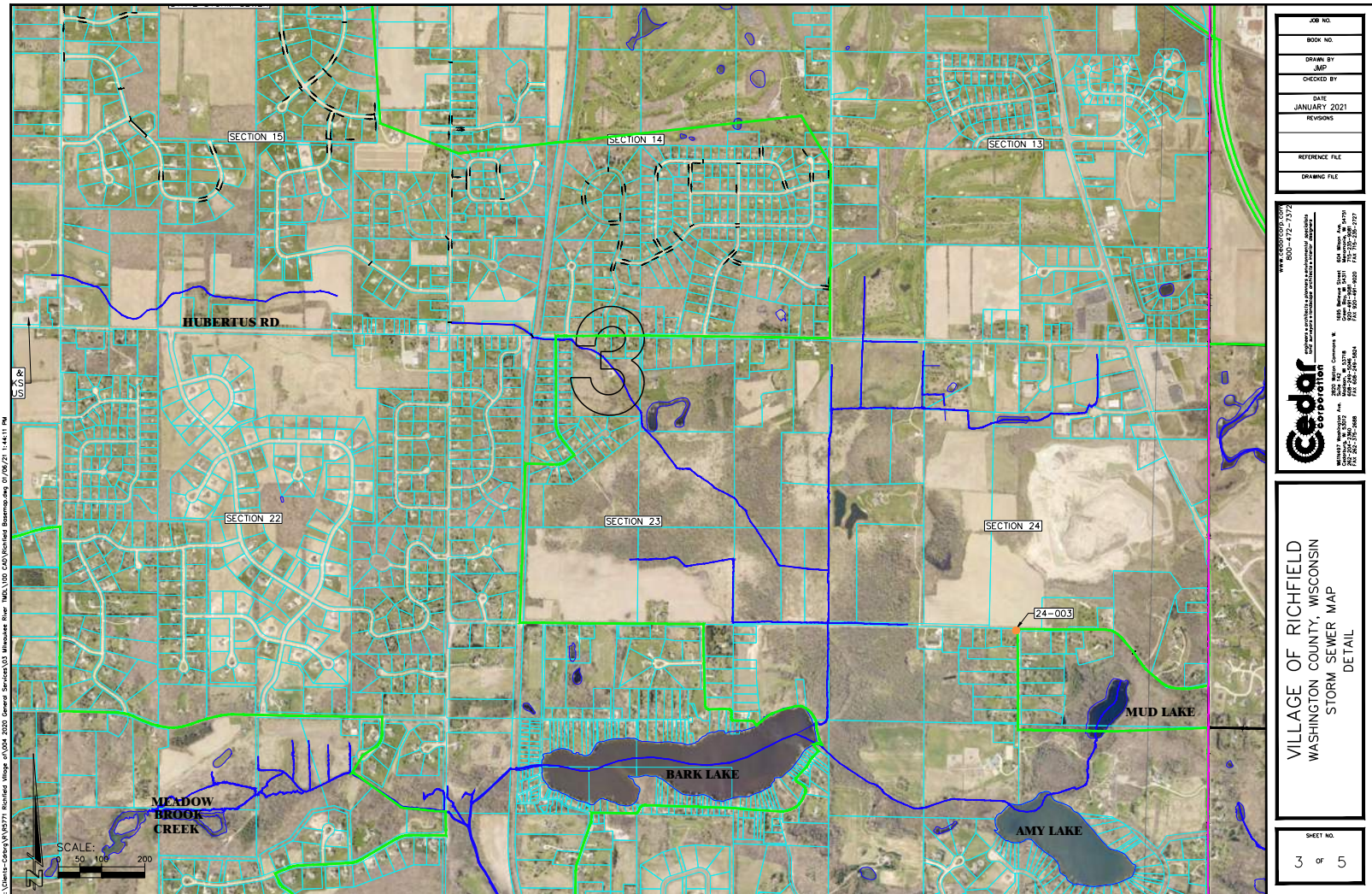
THE MEMOMONEE RIVER WATERSHED UPDATED IMPLEMENTATION PLAN

Village of Richfield MS4 Map (1 of 3: Reference Map)



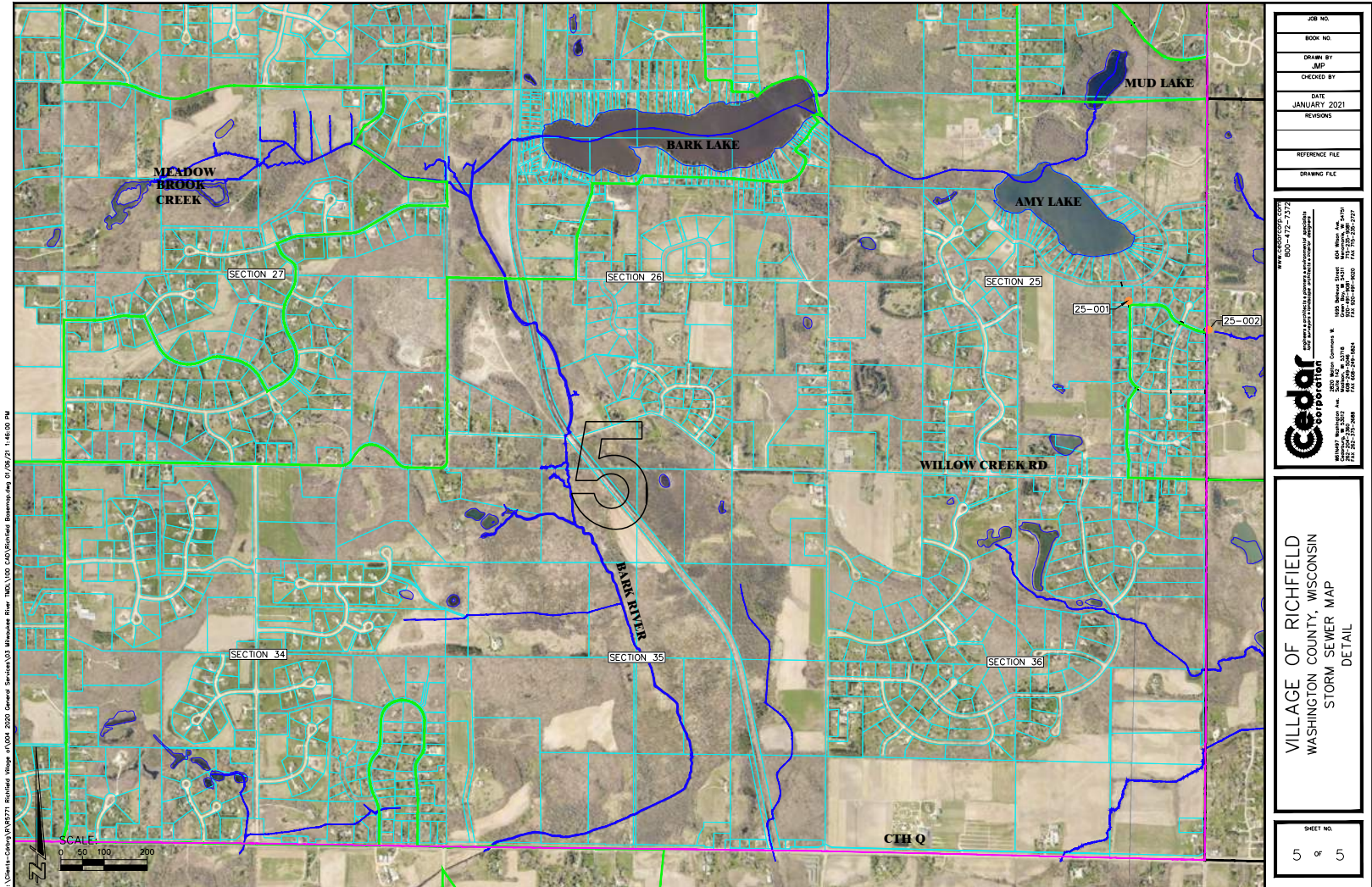
THE MEMOMONEE RIVER WATERSHED UPDATED IMPLEMENTATION PLAN

Village of Richfield MS4 Map (2 of 3: Central East)



THE MEMOMONEE RIVER WATERSHED UPDATED IMPLEMENTATION PLAN

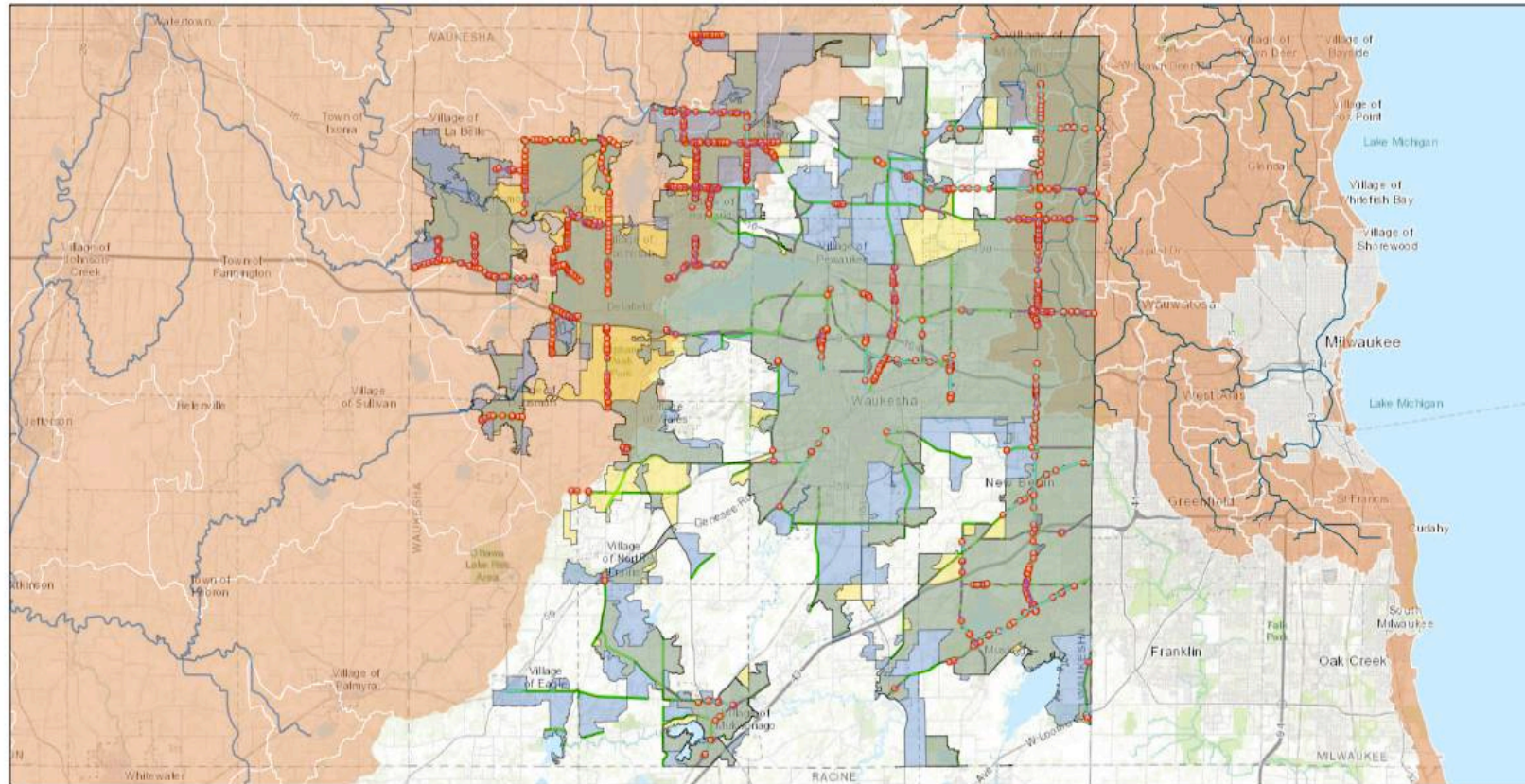
Village of Richfield MS4 Map (3 of 3: SE)



THE MEMOMONEE RIVER WATERSHED UPDATED IMPLEMENTATION PLAN

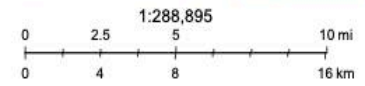
Waukesha County MS4 Map

ArcGIS Web Map



3/29/2021, 2:17:06 PM

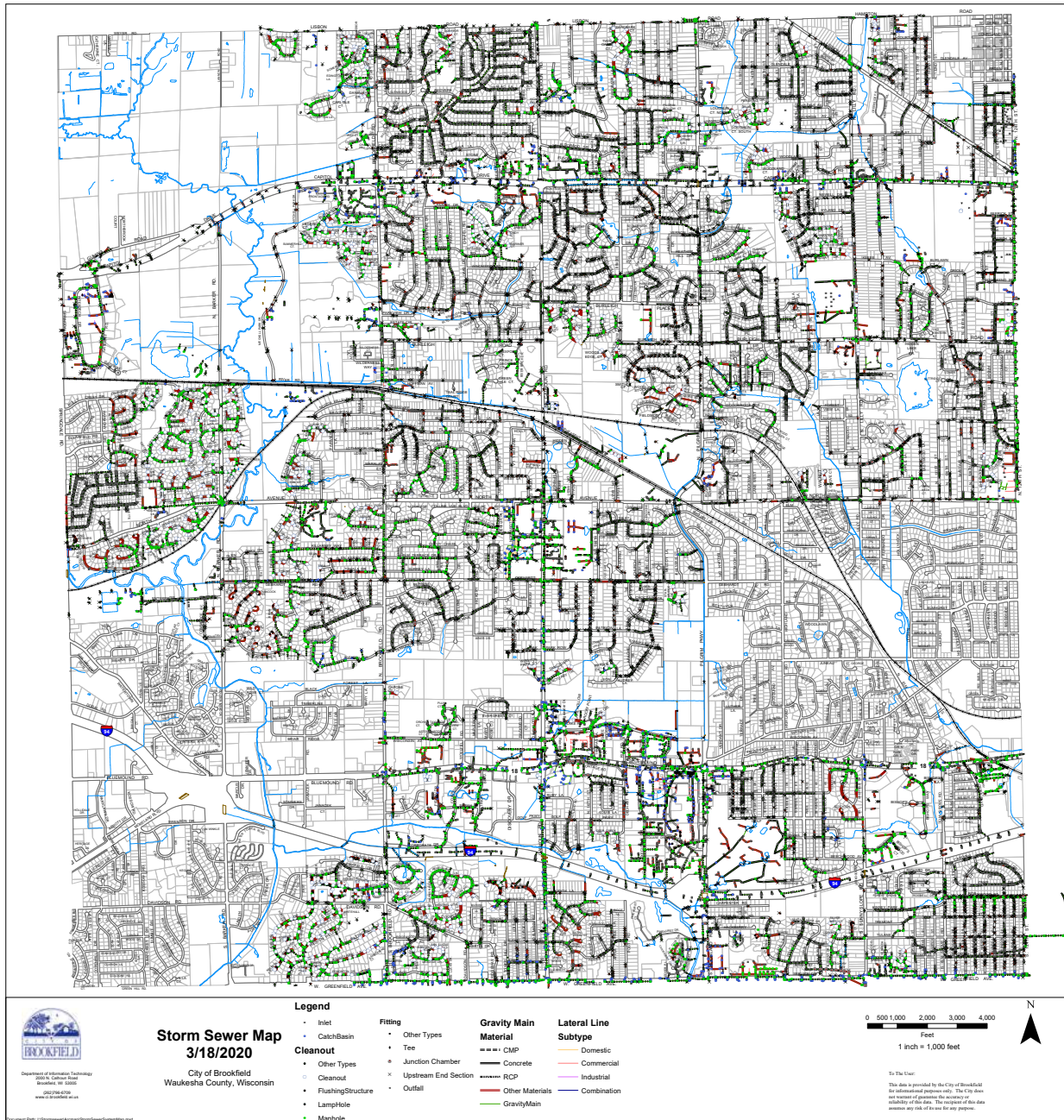
- MilwaukeeRiverTMDL - TMDLSubbasins_noCSSA
- Urban_Area - Urban_2010
- Urban_Area - Urban_2000
- Rock River TMDL - Rock_connectors
- Rock River TMDL - Rock303d_s08
- Rock River TMDL - Rock_Subbasins_reaches
- Conveyance - Major_outfall
- MS4_Highways
- Highway_Watersheds - Urban_watershed
- MilwaukeeRiverTMDL - TMDL_Reaches
- Conveyance - Rural_ditch_flow_direction
- Conveyance - StormSewer
- Conveyance - Outlets



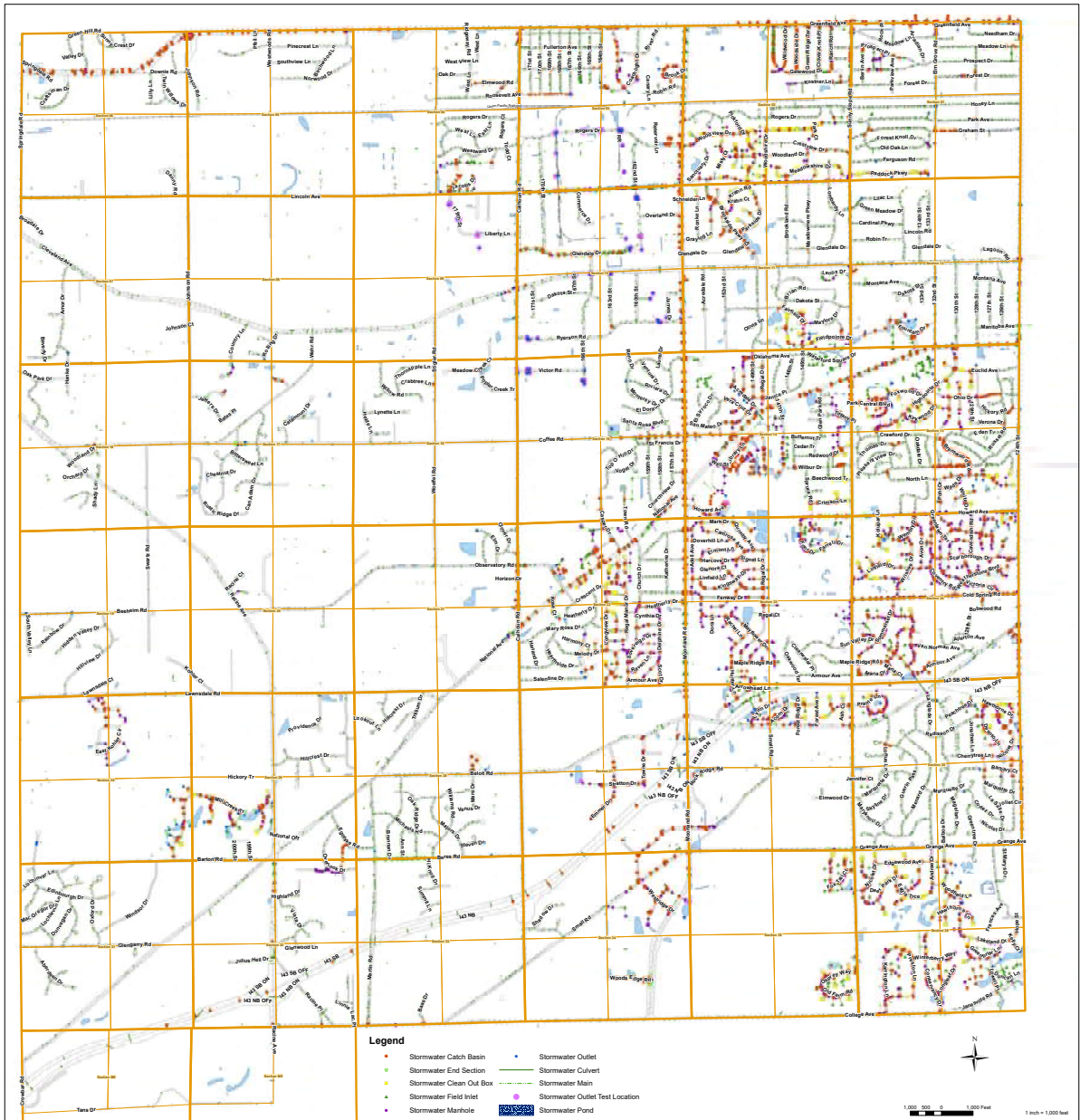
Waukesha County, Esri Canada, Esri, HERE, Garmin, USGS, NGA, EPA, USDA, NPS

Waukesha County, Esri Canada, Esri, HERE, Garmin, USGS, NGA, EPA, USDA, NPS | Waukesha County LIS | WC Land Information Office, WLIP, SEWRPC, Ayres Associates | Waukesha County, WI DNR, SEWRPC | Waukesha County Land Information Office, SEWRPC | Web AppBuilder for ArcGIS

City of Brookfield MS4 Map

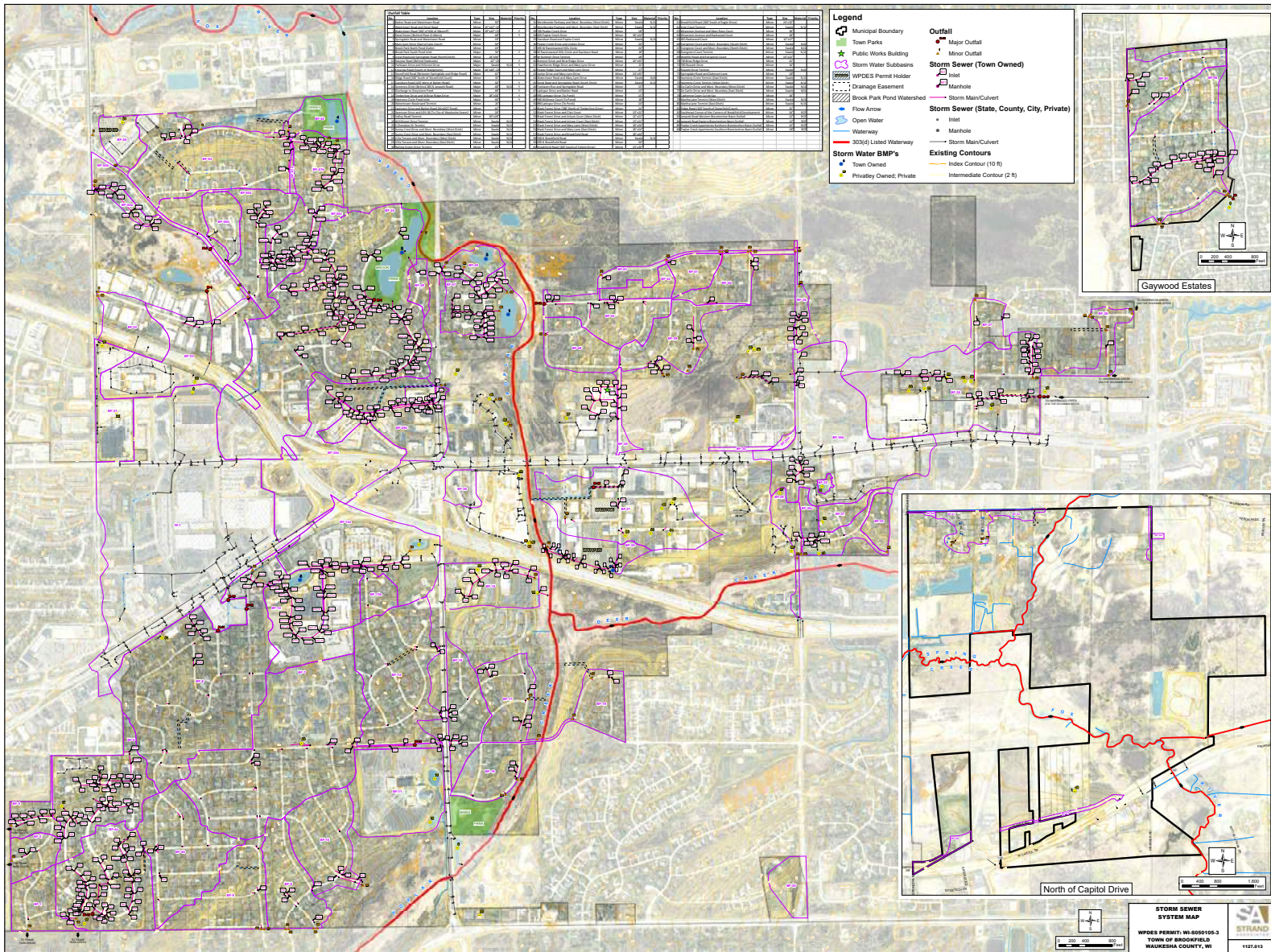


City of New Berlin MS4 Map



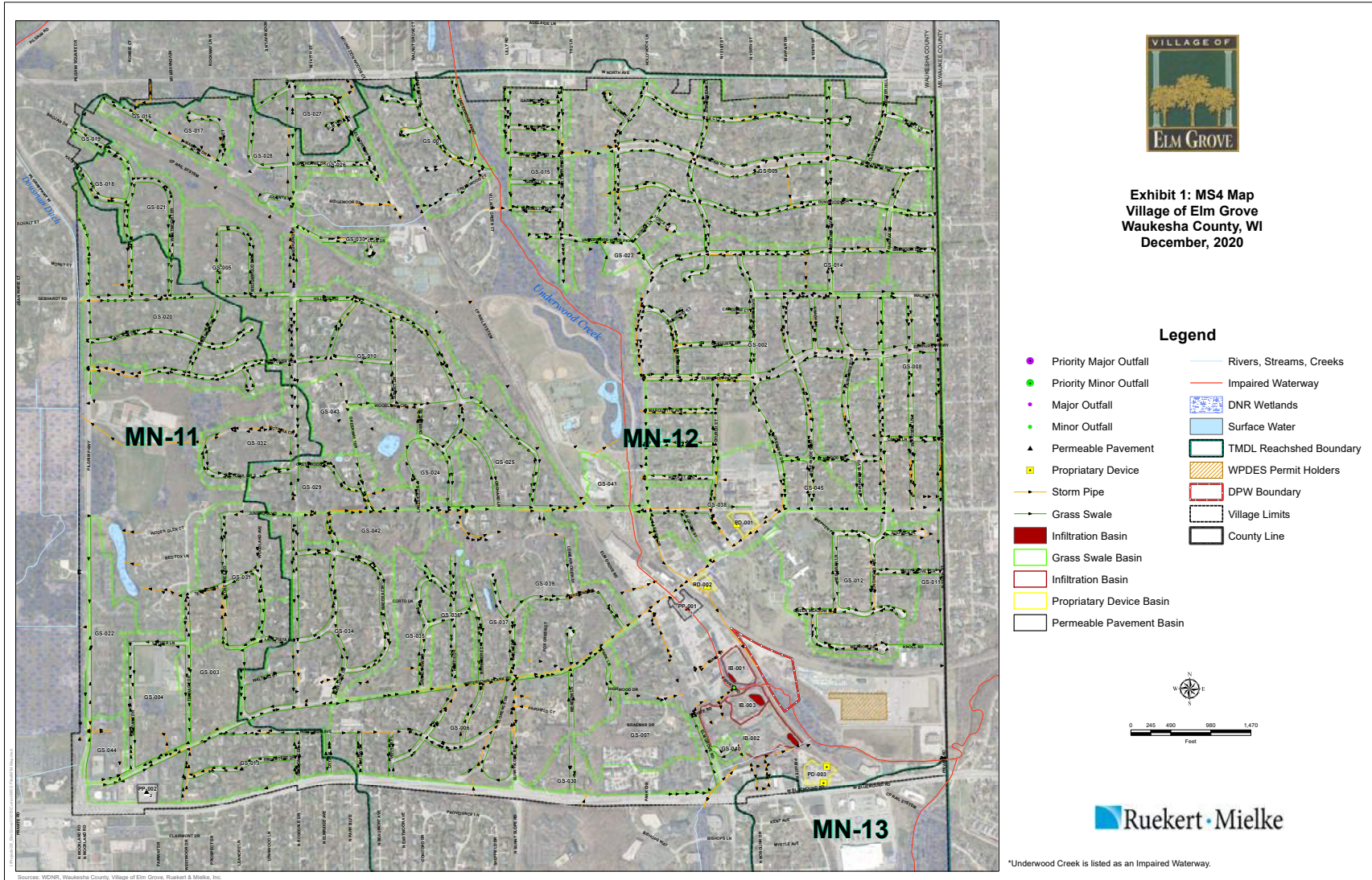
THE MEMOMONEE RIVER WATERSHED UPDATED IMPLEMENTATION PLAN

Town of Brookfield MS4 Map



THE MEMOMONEE RIVER WATERSHED UPDATED IMPLEMENTATION PLAN

Village of Elm Grove MS4 Map



THE MEMOMONEE RIVER WATERSHED UPDATED IMPLEMENTATION PLAN

Village of Menomonee Falls MS4 Map

