


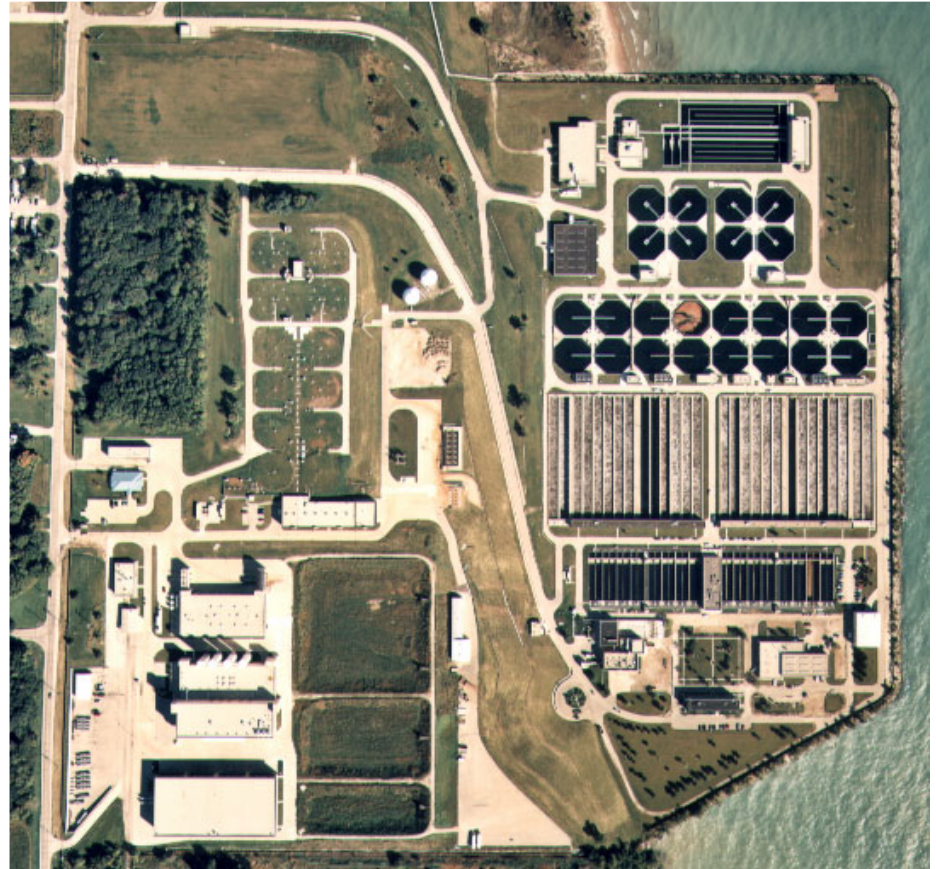


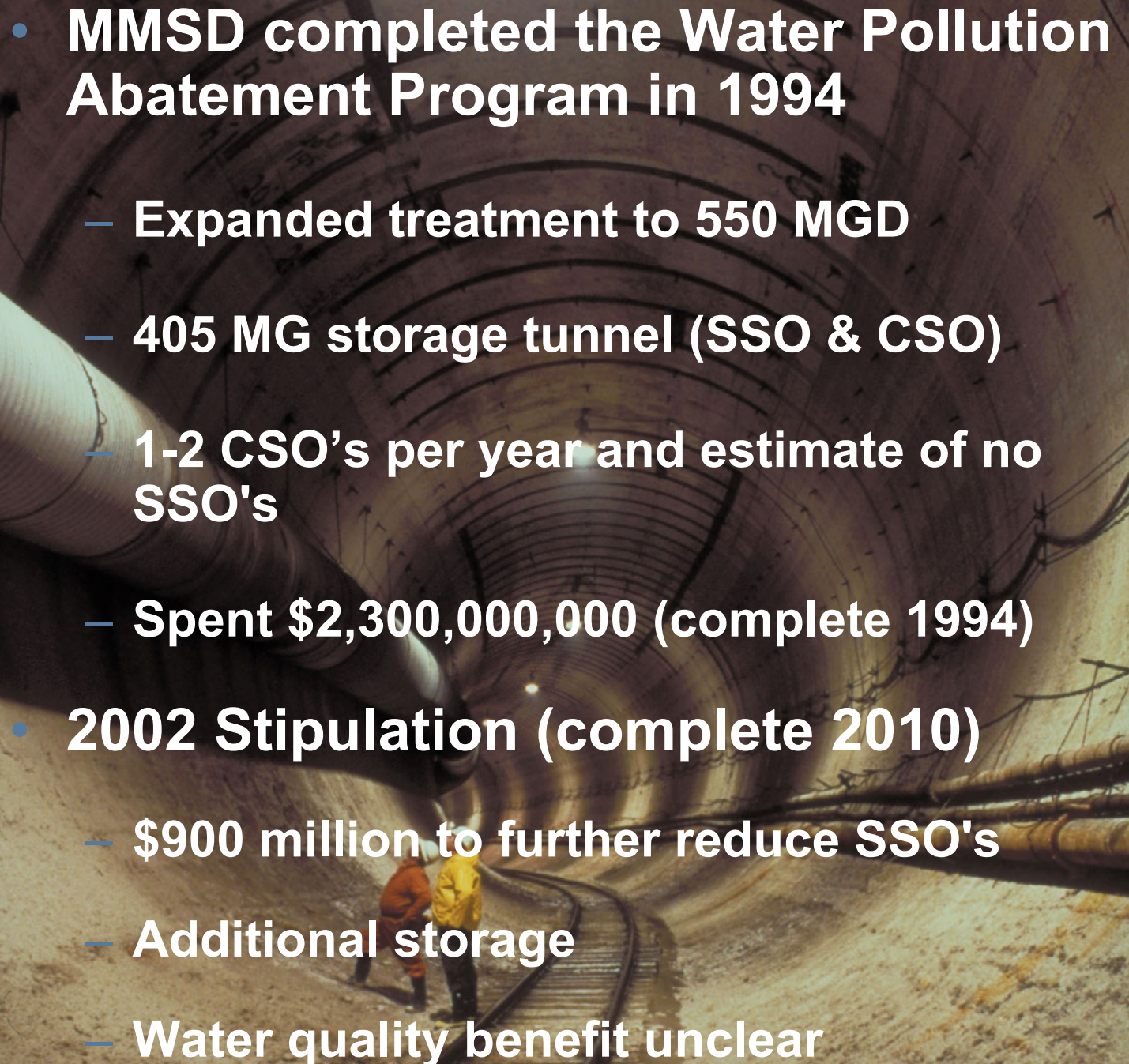
# Milwaukee's Next Step: Watershed Restoration Plans

- 
- Milwaukee WQI (RWQMPS)
  - What to do next?
  - Options Considered
  - Watershed Reclamation Plans

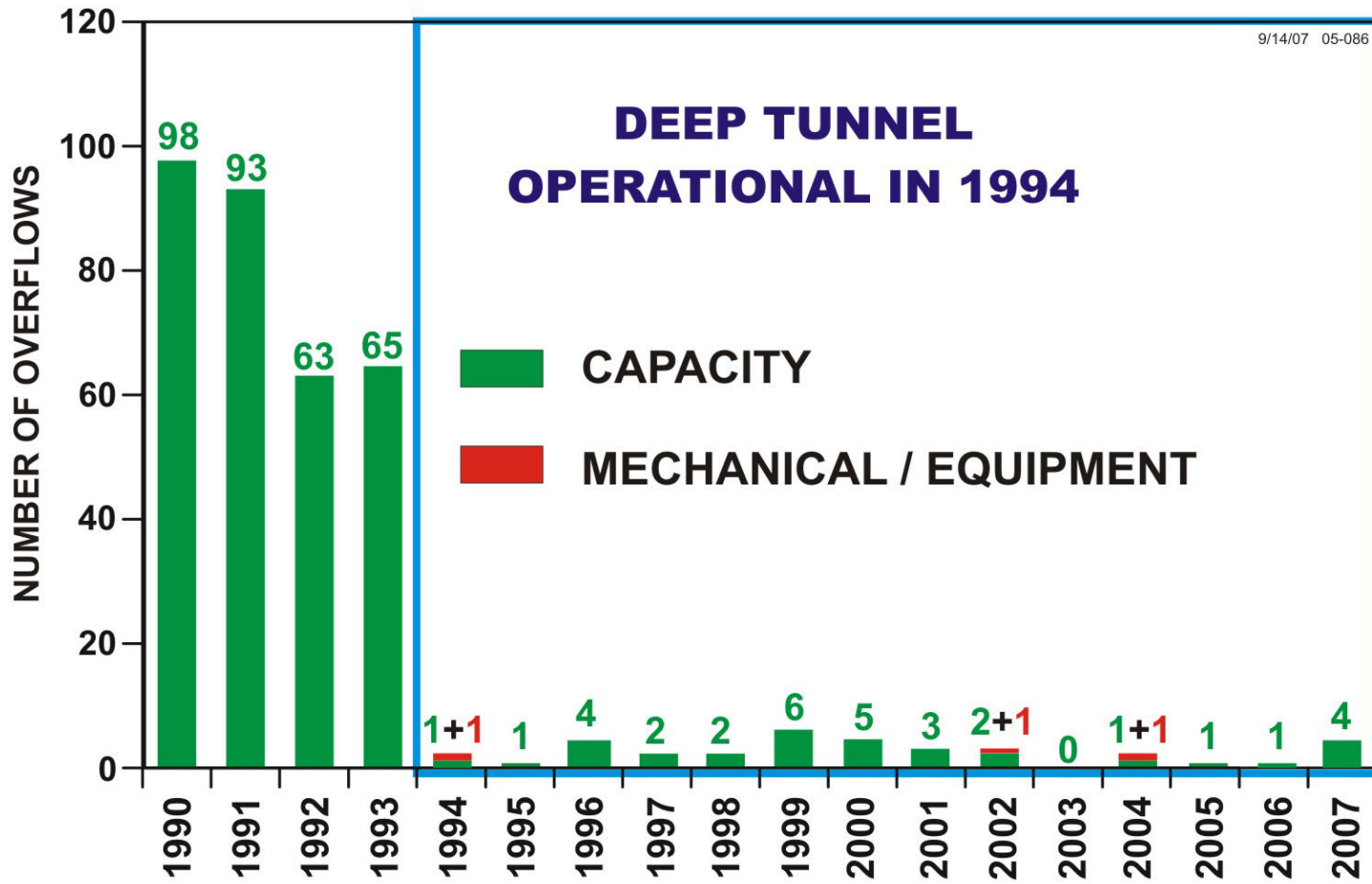
## Milwaukee Metropolitan Sewerage District (MMSD)


- **State-chartered regional agency**
- **Provides wastewater treatment for 1.1 million customers in 28 communities**
- **Provides flood management for 100 miles of streams**
- **Active role in surface water quality monitoring and research**



- 
- **MMSD completed the Water Pollution Abatement Program in 1994**
    - Expanded treatment to 550 MGD
    - 405 MG storage tunnel (SSO & CSO)
    - 1-2 CSO's per year and estimate of no SSO's
    - Spent \$2,300,000,000 (complete 1994)
  - **2002 Stipulation (complete 2010)**
    - \$900 million to further reduce SSO's
    - Additional storage
    - Water quality benefit unclear


# CSO





## Water Quality Initiative (WQI)QI: Used the Watershed Approach

- Determine water pollution sources causing the water quality problems
- Focus actions on greatest returns (where to spend the next \$1.00)

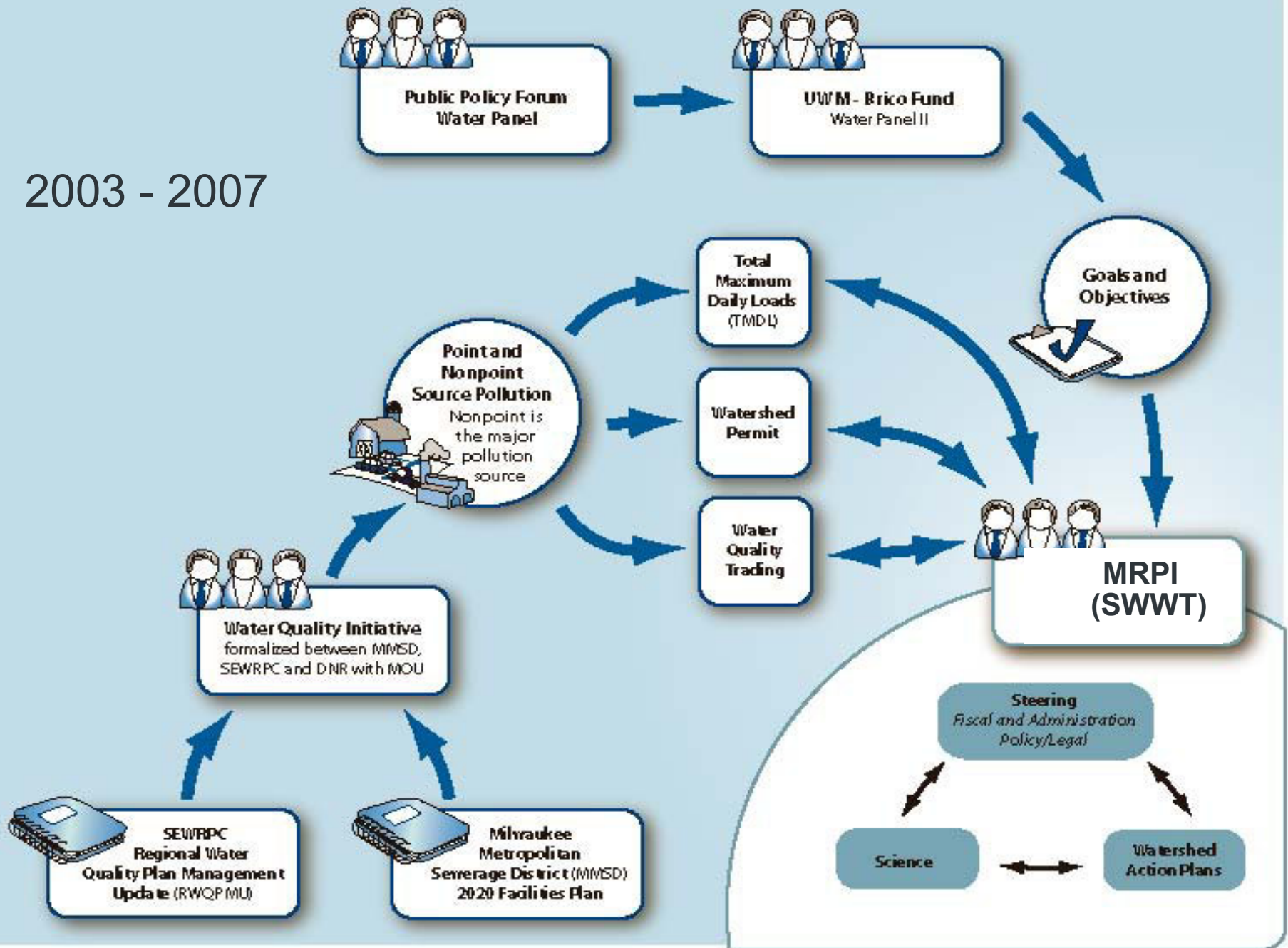
- 
- Joint study on water quality improvement – two separate plans developed:
    - Milwaukee Metropolitan Sewerage District (MMSD) 2020 Facilities Plan – 201 plan
    - Southeastern Wisconsin Regional Planning Commission (SEWRPC) Regional Water Quality Management Plan Update – 208 plan
    - Worked closely with WDNR (MOU)
  - Conclusions (RWQMPPU)



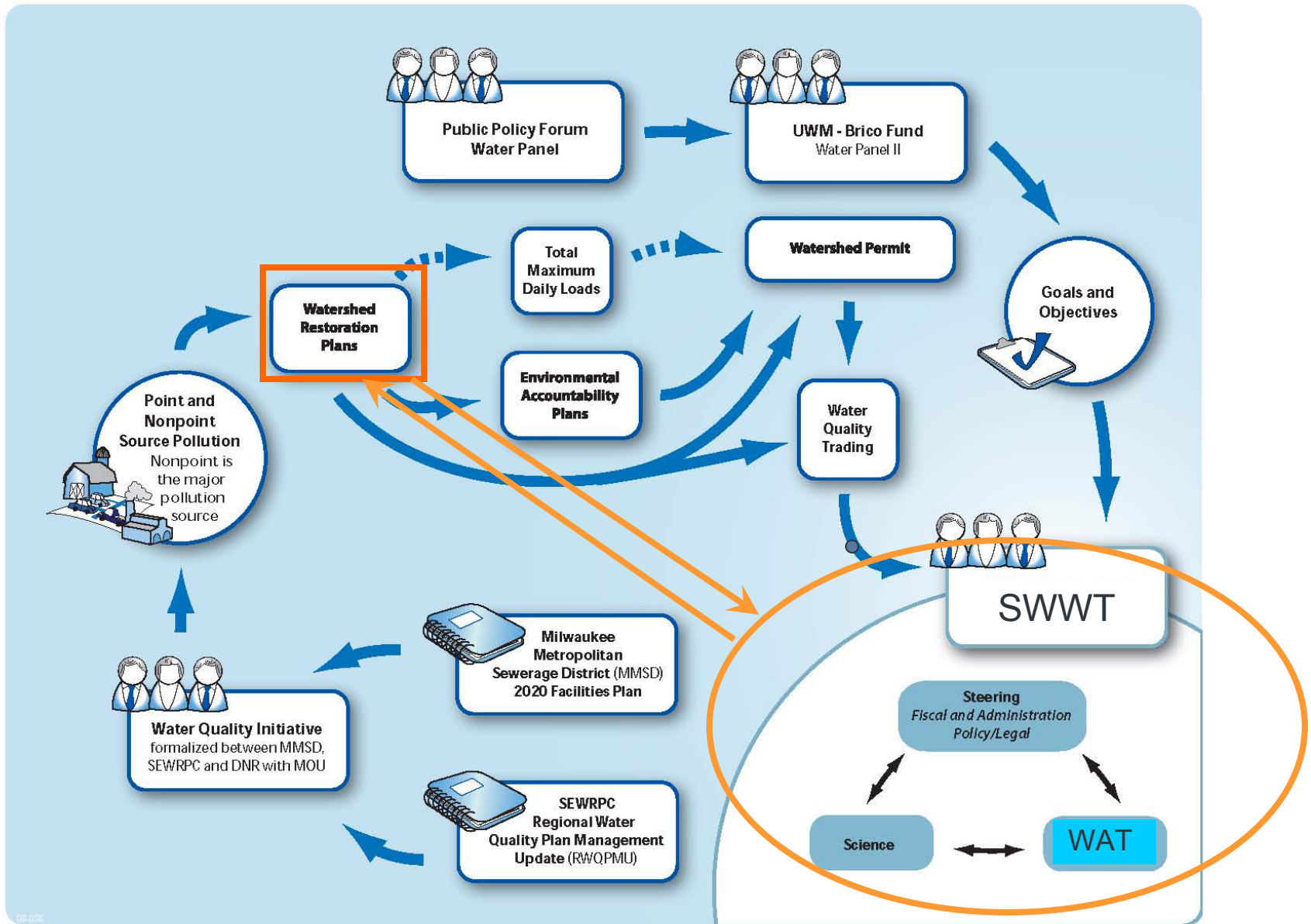
## How will the recommendations be implemented?

- SEWRPC does not have authority to implement
- MMSD has limited ability to implement nonpoint source controls and is limited by jurisdictional area

2003 - 2007




# FRAMEWORK FOR THE WATERSHED RESTORATION PLANS





SOUTHEASTERN WISCONSIN WATERSHEDS TRUST

- Collaborative effort to achieve healthy and sustainable water resources throughout the Greater Milwaukee Watersheds and nearshore Lake Michigan
- Non-governmental, non-taxing, voluntary partnership
- One of the main goals: cooperatively implement projects throughout the Greater Milwaukee Watersheds

- 
- Watershed Restoration Plans (WRPs)
    - Following 9 elements of the Clean Water Act section 319 guidelines for developing effective watershed plans for threatened and impaired waters
    - Collaborative effort with SWWT
    - Scheduled to complete WRPs for 2 of the 6 watersheds by November 2009