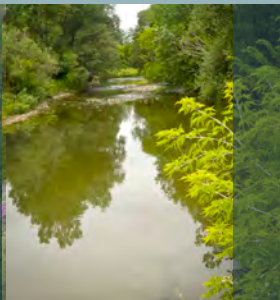


MENOMONEE RIVER GROUP

Speakers Bureau Catalog



SOUTHEASTERN WISCONSIN WATERSHEDS TRUST, INC.

The Menomonee River Group is a consortium of municipal and county members working together to protect our waterways and Lake Michigan through education and outreach efforts for residents, businesses, and others working in the Menomonee River Watershed.

TOPICS OF INTEREST

Ecology of Our Rivers & Lakes	3
Recreation, Culture & History	4
Challenges	5
Water Law & Regulations	5
Community Planning	6
Pollution Control, Conservation & Stewardship	6-7
Getting Involved	7
Menomonee River Watershed Contact Information	8



SPEAKER TOPICS & PROGRAMS

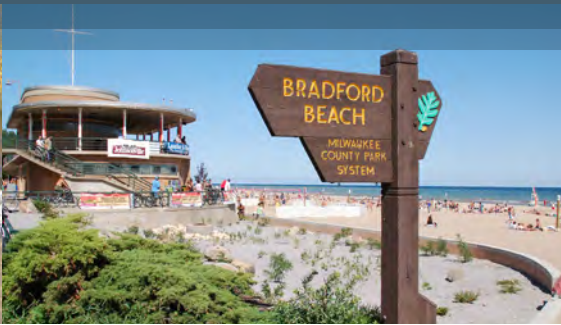
Put the focus on water. Help build a greater understanding of this vital resource by scheduling a presentation about water for your group, club, or association.

There are many ways to learn about our invaluable water resources and challenges that they face. We've assembled a diverse roster of presentations. They focus on water through the lens of history, ecology, recreation, archaeology, law, issues or efforts to protect our rivers and Lake Michigan.

The presenters are experts in their fields and include scientists, municipal department heads, leaders from nonprofit organizations and the sewerage district, an educator, a historian, and an artist. Each of these experts is not only knowledgeable but also passionate about our waters. We hope you'll find a topic of interest for your group or association.

For more information about a presentation or to schedule a program, please contact the presenter directly.





ECOLOGY OF OUR RIVERS AND LAKES

Natural History of Milwaukee's Urban Rivers

Tim Vargo • 414-964-8505
*Manager, Research & Citizen Science
Urban Ecology Center*
tvargo@urbanecologycenter.org

The Use of Fish to Measure River Environmental Quality

Will Wawrzyn • 414-382-7924
*Fisheries Biologist
WI Department of Natural Resources*
William.wawrzyn@wi.gov

What is a Healthy Beach?

Todd Brennan • 414-559-0317
*Wisconsin Outreach Coordinator
Alliance for the Great Lakes*
tbrennan@greatlakes.org

Protecting Stream Ecological Integrity Within Urban Environments

Tom Slawski • 262-547-6721
*Southeastern Wisconsin Regional
Planning Commission*
tslawski@sewrpc.com

COMMUNITY PLANNING

Two for One: Stormwater BMPs and Community Amenities

Kate Morgan • 414-416-6509
Water Policy Director, 1000 Friends of WI
kmorgan@1kfriends.org

Green Tier Legacy Communities

Steve Hiniker • 608-259-1000
Executive Director, 1000 Friends of WI
hiniker@1kfriends.org

Environmental Planning--Protecting Wildlife With Changing Development of the Land

Tom Slawski • 262-547-6721
*Principal Planner
Southeastern WI Regional Planning Commission*
tslawski@sewrpc.com



CHALLENGES

Nonpoint Pollution & the Health of Our Beaches

Karen Schapiro • 414-287-0207 x230
Executive Director, Milwaukee Riverkeeper
karen_schapiro@milwaukeekeeper.org

Identifying and Reporting Illicit Discharges and Construction Site Violations

Cheryl Nenn • 414-287-0207 x229
Riverkeeper, Milwaukee Riverkeeper
Cheryl_nenn@milwaukeekeeper.org

Water Quality and the Health of Our Waters

Melissa Malott • 608-251-7020
Water Program Director, Clean Wisconsin
mmalott@cleanwisconsin.org

Menomonee River Watershed: Impacts of Urbanization with Opportunities for Protection & Enhancement

Will Wawrzyn • 414-382-7924
Fisheries Biologist, WI DNR
William.wawrzyn@wi.gov

Sewer School: Highlighting MMSD's Wastewater Treatment Process and Efforts to Protect the Region's Waterways.

Kevin Shafer
Executive Director
Milwaukee Metropolitan Sewerage District (MMSD)
Cora Lee Palmer • 414-225-2191
Community Affairs Coordinator, MMSD
cpalmer@mmsd.com

The Impact of Invasive Species in Our Lakes

Dr. Carmen Aguilar • 414-382-1755
Associate Scientist
UWM Great Lakes WATER Institute
aguilar@uwm.edu
Dr. Russell Cuhel • 414-382-1711
Senior Scientist
UWM Great Lakes WATER Institute
rcuhel@uwm.edu

New Threats to Our Wetlands: Invasive Species

Ginny Plumeau • 262-376-0735
President, Principal Ecologist
Cedarburg Science
gplumeau@cedarburgscience.com

GETTING INVOLVED

<p>Southeastern WI Watersheds Trust, Inc. Working Together for Our Rivers and Lake Michigan</p>	<p>Jeff Martinka • 414-382-1766 <i>Executive Director Southeastern WI Watersheds Trust, Inc. martinka@swwtwater.org</i></p>
<p>Restoring the Menomonee River: SWWT Water Action Team</p>	<p><u>Co-Chairs:</u> Cheryl Nenn • 414-287-0207 x229 <i>Riverkeeper, Milwaukee Riverkeeper Cheryl_nenn@milwaukeeiverkeeper.org</i></p> <p>Gail Epping Overholt • 414-256-4632 <i>Basin Educator, University of WI Extension Gail.overholt@ces.uwex.edu</i></p>
<p>Restoring the Kinnickinnic River: SWWT Water Action Team</p>	<p><u>Co-Chairs:</u> Ben Gramling • 414-385-3577 <i>Director-Environmental Health Programs 16th Street Community Health Center bgramling@sschc.org</i></p> <p>Ben Sykes <i>Associate Attorney, Foley & Lardner bsykes@foley.com</i></p>
<p>Citizen Monitoring: Joining the Effort</p>	<p>Cheryl Nenn • 414-287-0207 x229 <i>Riverkeeper, Milwaukee Riverkeeper Cheryl_nenn@milwaukeeiverkeeper.org</i></p>

RECREATION, CULTURE & HISTORY

<p>Built on Water: History of Use and Abuse in the Milwaukee Area</p>	<p>John Gurda, <i>Historian</i> mail@johngurda.com</p>
<p>People of the Port: Three Centuries of Change on Milwaukee's Jones Island</p>	<p>John Gurda, <i>Historian</i> mail@johngurda.com</p>
<p>Paddling the Waters of SE Wisconsin</p>	<p>Cheryl Nenn • 414-287-0207 x229 <i>Riverkeeper, Milwaukee Riverkeeper Cheryl_nenn@milwaukeeiverkeeper.org</i></p>
<p>Urban Wilderness Project</p>	<p>Eddee Daniel • 414-771-8857 <i>Professional Photographer eddee@eddeedaniel.com</i></p>
<p>Perceiving the Prehistoric Past: Archeological Evidence Along Milwaukee's Rivers</p>	<p>Kevin Cullen • 414-765-9966 <i>Archeologist - Discovery World kcullen@discoveryworld.org</i></p>

POLLUTION CONTROL, CONSERVATION AND

Development with Water Quality in Mind	Melissa Goins • 414-267-2434 <i>President, Maures Development Group</i> Melissa@mauresllc.com
Harvesting Rain Water: Rain Gardens & Rain Barrels	Gail Epping Overholt • 414-256-4632 <i>Basin Educator, University of WI Extension</i> Gail.overholt@ces.uwex.edu
Improving Water Quality at Our Beaches: New Solutions	Steve Keith, P.E. • 414-278-4355 <i>Sustainability Engineer, Milwaukee County</i> Stevan.keith@milwcnty.com
New Approaches to Stormwater Mitigation	Steve Keith, P.E. • 414-278-4355 <i>Sustainability Engineer, Milwaukee County</i> Stevan.keith@milwcnty.com
Managing Stormwater Where It Falls	Susan Greenfield • 262-898-2055 <i>Executive Director, Root-Pike WIN</i> sgreenfield@wi.rr.com
Natural Landscaping for Riverfront Areas	Marc White • 1-800-287-8098 <i>Director of Research and Stewardship</i> <i>Riveredge Nature Center</i> mwhite@riveredge.us
Rain Barrels: Every Drop Counts	Emily Brown • 414-272-5462 x 105 <i>Education & Outreach Manager</i> <i>Keep Greater Milwaukee Beautiful</i> ebrown@kgmb.org
Wisconsin Wetlands Association: Promoting and Protecting Wetlands in Wisconsin	Brooke Bushman • 608-250-9971 <i>Outreach Programs Director, WI Wetlands Association</i> programs@wisconsinwetlands.org
Land Conservation for Water Quality	Kimberly Gleffe • 414-271-8000 x3 <i>Executive Director, River Revitalization Foundation</i> kgleffe@riverrevitalizationfoundation.org
MMSD GreenseamsSM Program	Stephen McCarthy • 414-225-2100 <i>Landscape Architect, MMSD</i> SMcCarthy@mmsd.com
Land Trusts—Working to Protect Our Water Resources	Shawn Graff • 262-338-1794 <i>Executive Director,</i> <i>Ozaukee Washington County Land Trust</i> owl@owl.org



STEWARDSHIP



<p>Milwaukee River Greenway</p>	<p>Ann Brummitt • 414-287-0207 x227 Executive Director, Milwaukee River Greenway Coalition ann@protectmilwaukeeiver.org</p>
<p>The Importance of Wetlands for Water Quality</p>	<p>Ginny Plumeau • 262-376-0735 President & Senior Ecologist, Cedarburg Science gplumeau@cedarburgscience.com</p>
<p>New Solutions for On-site Stormwater Mitigation</p>	<p>Mary Beth Driscoll • 414-405-3272 Executive Director, Groundwork Milwaukee mbdriscoll@groundworkmke.org</p>
<p>Developing an Ecologically Wise Citizenry: An Educational Approach</p>	<p>Beth Fetterly • 414-964-8505 Senior Director of Education & Strategic Planning Urban Ecology Center bfetterly@urbanecologycenter.org</p>
<p>The SEWRPC Regional Water Quality Management Plan Update for the Greater Milwaukee Watersheds</p>	<p>Mike Hahn • 414-547-6721 Chief Environmental Engineer Southeastern WI Regional Planning Commission mhahn@sewrpc.com</p>
<p>Current Flood Management and Stream Restoration Efforts</p>	<p>Tom Chapman • 414-225-2154 Engineering Services Manager Milwaukee Metropolitan Sewerage District tchapman@mmsd.com</p> <p>Dave Fowler • 414-277-6368 Senior Project Manager Milwaukee Metropolitan Sewerage District dfowler@mmsd.com</p>

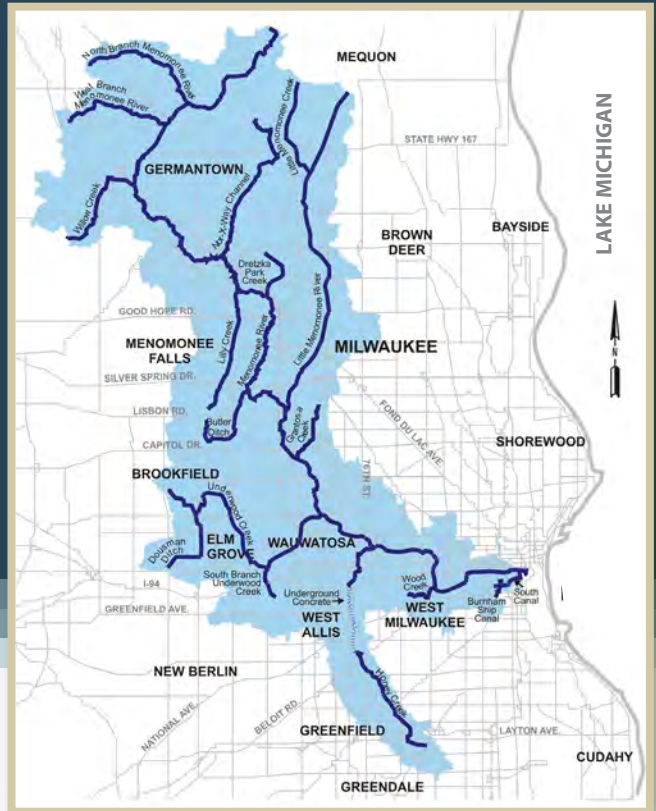
WATER LAWS & REGULATIONS

<p>The Clean Water Act</p>	<p>Dennis Grzezinski • 414-289-9200 Senior Counsel Midwest Environmental Advocates dennisg@midwestadvocates.org</p>
<p>Wisconsin's Groundwater Law: Now and Next Steps</p>	<p>Jodi Habush Sinykin • 414-507-0004 Counsel Midwest Environmental Advocates hslaw@bizwi.rr.com</p>

THE MEMOMONEE RIVER WATERSHED

The Menomonee River Watershed is one of six watersheds in the region. The Menomonee River Watershed is the area of land that water flows over or through that drains into the Menomonee River and its tributaries. The Menomonee River joins the Kinnickinnic and Milwaukee Rivers and flows into Lake Michigan.

Menomonee River Watershed encompasses 134 square miles of land and is part of four counties. There are four townships, six villages, and seven cities within its boundaries. It is home to over 337,000 people. The land use is divided between 60% urban and 40% rural including agriculture and open space.



MUNICIPAL AND VILLAGE CONTACTS FOR SPEAKER INFORMATION

MEMOMONEE RIVER GROUP

Kate Morgan, *Program Coordinator*
kmorgan@1kfriends.org (414) 416-6509

BROOKFIELD (262) 787-3547
www.ci.brookfield.wi.us

BUTLER (262) 781-1000
www.butlerwi.gov

ELM GROVE (262) 782-6700
www.elmgrovewi.org/public_works.htm

GERMANTOWN (262) 483-6792
www.village.germantown.wi.us

GREENFIELD (414) 329-5324
www.ci.greenfield.wi.us

MILWAUKEE COUNTY (414) 278-4832
www.milwaukeecounty.org

MEMOMONEE FALLS (262) 781-1000
www.menomonee-falls.org/stormwater

WAUWATOSA (414) 479-8991
www.wauwatosa.net

WEST MILWAUKEE (262) 781-1000
www.westmilwaukee.org

